

# HO-1 Rabbit Polyclonal Antibody



CAB11102

## Product Information

### Size:

20uL, 50uL, 100uL, 200uL

### Observed MW:

32kDa

### Calculated MW:

32kDa

### Applications:

WB IHC IF

### Reactivity:

Human, Mouse, Rat

## Protein Background

Heme oxygenase, an essential enzyme in heme catabolism, cleaves heme to form biliverdin, which is subsequently converted to bilirubin by biliverdin reductase, and carbon monoxide, a putative neurotransmitter. Heme oxygenase activity is induced by its substrate heme and by various nonheme substances. Heme oxygenase occurs as 2 isozymes, an inducible heme oxygenase-1 and a constitutive heme oxygenase-2. HMOX1 and HMOX2 belong to the heme oxygenase family.

## Immunogen information

### Gene ID:

3162

### Uniprot

P09601

### Synonyms:

HMOX1; HMOX1D; HO-1; HSP32; bK286B10

## Antibody Information

### Recommended dilutions:

WB 1:500 - 1:2000 IHC 1:50  
- 1:200 IF 1:50 - 1:200

### Source:

Rabbit

### Isotype:

IgG

### Purification:

Affinity purification

### Immunogen:

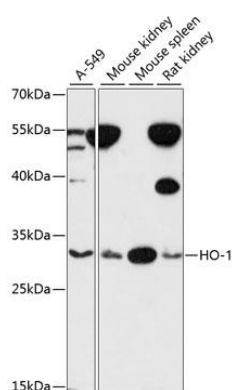
Recombinant fusion protein containing a sequence corresponding to amino acids 1-288 of human HO-1 (NP\_002124.1).

### Storage:

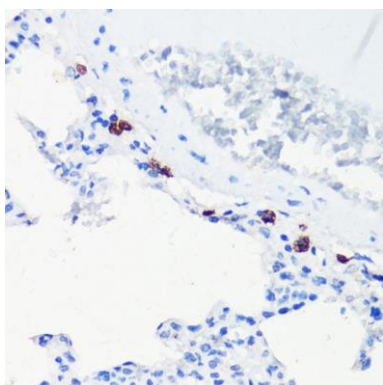
Store at -20°C. Avoid freeze / thaw cycles. Buffer: PBS with 0.02% sodium azide, 50% glycerol, pH7.3.

## Product Images

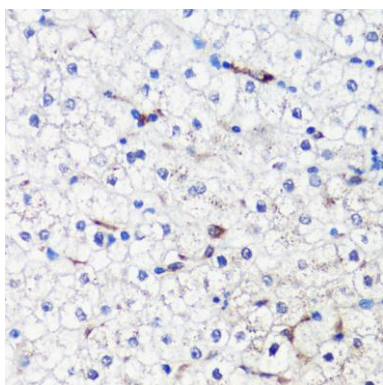
---



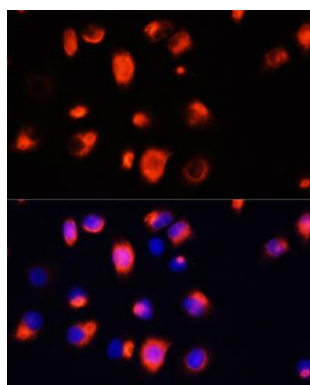
Western blot analysis of extracts of various cell lines, using HO-1 antibody (CAB11102) at 1:1000 dilution. Secondary antibody: HRP Goat Anti-Rabbit IgG (H+L) (CABS014) at 1:10000 dilution. Lysates/proteins: 25ug per lane. Blocking buffer: 3% nonfat dry milk in TBST. Detection: ECL Basic Kit (CABM00020). Exposure time: 10s.



Immunohistochemistry of paraffin-embedded rat lung using HO-1 antibody (CAB11102) at dilution of 1:200 (40x lens).



Immunohistochemistry of paraffin-embedded human liver using HO-1 antibody (CAB11102) at dilution of 1:200 (40x lens).



Immunofluorescence analysis of HeLa cells using HO-1 antibody (CAB11102) at dilution of 1:100 (40x lens). Blue: DAPI for nuclear staining.