

# IL6 Rabbit Polyclonal Antibody



CAB11114

## Product Information

### Size:

20uL, 50uL, 100uL, 200uL

### Observed MW:

### Calculated MW:

23kDa

### Applications:

IHC

### Reactivity:

Human, Mouse, Rat

## Antibody Information

### Recommended dilutions:

IHC 1:50 - 1:100

### Source:

Rabbit

### Isotype:

IgG

### Purification:

Affinity purification

## Protein Background

This gene encodes a cytokine that functions in inflammation and the maturation of B cells. In addition, the encoded protein has been shown to be an endogenous pyrogen capable of inducing fever in people with autoimmune diseases or infections. The protein is primarily produced at sites of acute and chronic inflammation, where it is secreted into the serum and induces a transcriptional inflammatory response through interleukin 6 receptor, alpha. The functioning of this gene is implicated in a wide variety of inflammation-associated disease states, including susceptibility to diabetes mellitus and systemic juvenile rheumatoid arthritis. Alternative splicing results in multiple transcript variants.

## Immunogen information

### Gene ID:

3569

### Uniprot

P05231

### Synonyms:

IL6; BSF-2; BSF2; CDF; HGF; HSF; IFN-beta-2; IFNB2; IL-6

### Immunogen:

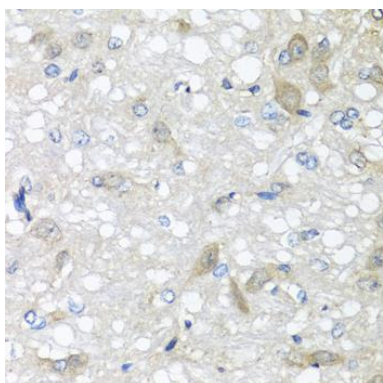
Recombinant fusion protein containing a sequence corresponding to amino acids 30-212 of human IL6 (NP\_000591.1).

### Storage:

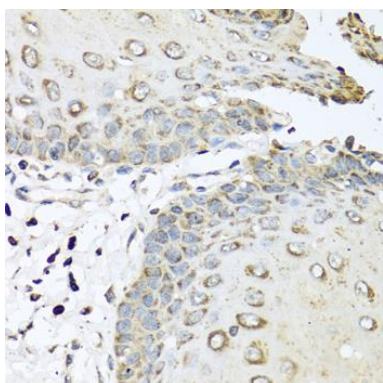
Store at -20°C. Avoid freeze / thaw cycles. Buffer: PBS with 0.02% sodium azide, 50% glycerol, pH7.3.

## Product Images

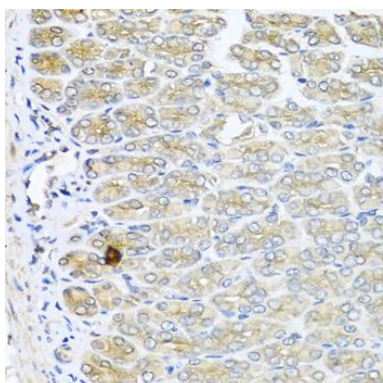
---



Immunohistochemistry of paraffin-embedded rat brain using IL6 antibody (CAB11114) at dilution of 1:100 (40x lens).



Immunohistochemistry of paraffin-embedded human esophagus using IL6 antibody (CAB11114) at dilution of 1:100 (40x lens).



Immunohistochemistry of paraffin-embedded mouse stomach using IL6 antibody (CAB11114) at dilution of 1:100 (40x lens).