

IRS1 Rabbit Polyclonal Antibody



CAB11121

Product Information

Size:

20uL, 50uL, 100uL, 200uL

Observed MW:

135kDa

Calculated MW:

131kDa

Applications:

WB

Reactivity:

Human

Protein Background

This gene encodes a protein which is phosphorylated by insulin receptor tyrosine kinase. Mutations in this gene are associated with type II diabetes and susceptibility to insulin resistance.

Immunogen information

Gene ID:

3667

Uniprot

P35568

Synonyms:

HIRS-1; IRS1

Antibody Information

Recommended dilutions:

WB 1:500 - 1:2000

Source:

Rabbit

Isotype:

IgG

Purification:

Affinity purification

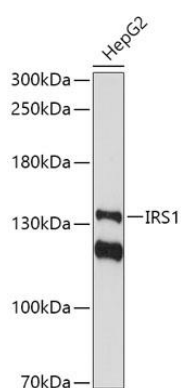
Immunogen:

Recombinant fusion protein containing a sequence corresponding to amino acids 735-855 of human IRS1 (NP_005535.1).

Storage:

Store at -20°C. Avoid freeze / thaw cycles. Buffer: PBS with 0.02% sodium azide, 50% glycerol, pH7.3.

Product Images



Western blot analysis of extracts of HepG2 cells, using IRS1 antibody (CAB11121) at 1:1000 dilution. Secondary antibody: HRP Goat Anti-Rabbit IgG (H+L) (CABS014) at 1:10000 dilution. Lysates/proteins: 25ug per lane. Blocking buffer: 3% nonfat dry milk in TBST. Detection: ECL Basic Kit (CABM00020). Exposure time: 90s.