

**[KO Validated] CDK4 Rabbit Monoclonal Antibody**  
**CAB11136**



---

**Product Information**

**Size:**

20uL, 50uL, 100uL, 200uL

**Observed MW:**

34kDa

**Calculated MW:**

34kDa

**Applications:**

WB IF

**Reactivity:**

Human

**Protein Background**

The protein encoded by this gene is a member of the Ser/Thr protein kinase family. This protein is highly similar to the gene products of *S. cerevisiae* cdc28 and *S. pombe* cdc2. It is a catalytic subunit of the protein kinase complex that is important for cell cycle G1 phase progression. The activity of this kinase is restricted to the G1-S phase, which is controlled by the regulatory subunits D-type cyclins and CDK inhibitor p16(INK4a). This kinase was shown to be responsible for the phosphorylation of retinoblastoma gene product (Rb). Mutations in this gene as well as in its related proteins including D-type cyclins, p16(INK4a) and Rb were all found to be associated with tumorigenesis of a variety of cancers. Multiple polyadenylation sites of this gene have been reported. [provided by RefSeq, Jul 2008]

**Immunogen information**

**Gene ID:**

1019

**Uniprot**

P11802

**Antibody Information**

**Recommended dilutions:**

WB 1:500 - 1:2000 IF 1:50 - 1:200

**Source:**

Rabbit

**Synonyms:**

CMM3; PSK-J3

**Immunogen:**

A synthesized peptide derived from human CDK4

**Isotype:**

IgG

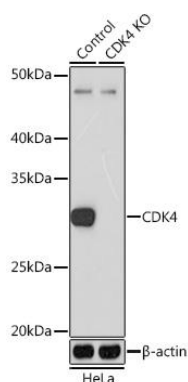
**Storage:**

Store at -20°C. Avoid freeze / thaw cycles. Buffer: PBS with 0.02% sodium azide, 0.05% BSA, 50% glycerol, pH7.3.

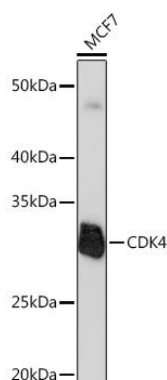
**Purification:**

Affinity purification

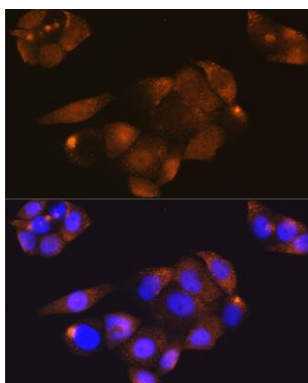
## Product Images



Western blot analysis of extracts from normal (control) and CDK4 knockout (KO) HeLa cells, using CDK4 Rabbit mAb (CAB11136) at 1:1000 dilution. Secondary antibody: HRP Goat Anti-Rabbit IgG (H+L) (CABS014) at 1:10000 dilution. Lysates/proteins: 25ug per lane. Blocking buffer: 3% nonfat dry milk in TBST. Detection: ECL Basic Kit (CABM00020). Exposure time: 3min.



Western blot analysis of extracts of MCF7 cells, using CDK4 Rabbit mAb (CAB11136) at 1:1000 dilution. Secondary antibody: HRP Goat Anti-Rabbit IgG (H+L) (CABS014) at 1:10000 dilution. Lysates/proteins: 25ug per lane. Blocking buffer: 3% nonfat dry milk in TBST. Detection: ECL Basic Kit (CABM00020). Exposure time: 3min.



Immunofluorescence analysis of HeLa cells using CDK4 Rabbit mAb (CAB11136) at dilution of 1:100 (40x lens). Blue: DAPI for nuclear staining.