

[KO Validated] IL18 Rabbit Polyclonal Antibody



CAB1115

Product Information

Size:

20uL, 50uL, 100uL, 200uL

Observed MW:

23kDa

Calculated MW:

21kDa/22kDa

Applications:

WB IP

Reactivity:

Human, Mouse, Rat

Protein Background

The protein encoded by this gene is a proinflammatory cytokine that augments natural killer cell activity in spleen cells, and stimulates interferon gamma production in T-helper type I cells. Alternatively spliced transcript variants encoding different isoforms have been found for this gene.

Immunogen information

Gene ID:

3606

Uniprot

Q14116

Synonyms:

IL18; IGIF; IL-18; IL-1g; IL1F4

Antibody Information

Recommended dilutions:

WB 1:500 - 1:2000 IP 1:50 - 1:100

Source:

Rabbit

Isotype:

IgG

Purification:

Affinity purification

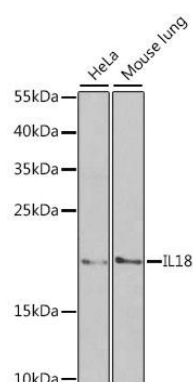
Immunogen:

Recombinant fusion protein containing a sequence corresponding to amino acids 37-193 of human IL18 (NP_001553.1).

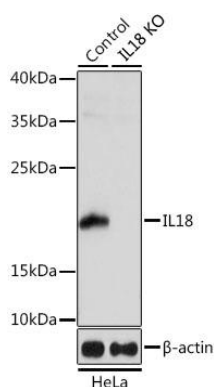
Storage:

Store at -20°C. Avoid freeze / thaw cycles. Buffer: PBS with 0.02% sodium azide, 50% glycerol, pH7.3.

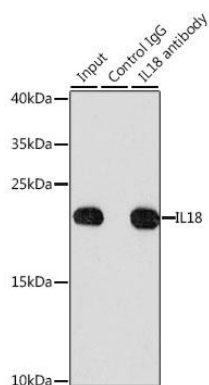
Product Images



Western blot analysis of extracts of various cell lines, using IL18 antibody (CAB1115) at 1:1000 dilution. Secondary antibody: HRP Goat Anti-Rabbit IgG (H+L) (CABS014) at 1:10000 dilution. Lysates/proteins: 25ug per lane. Blocking buffer: 3% nonfat dry milk in TBST. Detection: ECL Basic Kit (CABM00020).



Western blot analysis of extracts from normal (control) and IL18 knockout (KO) HeLa cells, using IL18 antibody (CAB1115) at 1:1000 dilution. Secondary antibody: HRP Goat Anti-Rabbit IgG (H+L) (CABS014) at 1:10000 dilution. Lysates/proteins: 25ug per lane. Blocking buffer: 3% nonfat dry milk in TBST. Detection: ECL Basic Kit (CABM00020). Exposure time: 5s.



Immunoprecipitation analysis of 200ug extracts of HeLa cells, using 3 ug IL18 antibody (CAB1115). Western blot was performed from the immunoprecipitate using IL18 antibody (CAB1115) at a dilution of 1:1000.