

MTCO2 Rabbit Polyclonal Antibody



CAB11154

Product Information

Size:

20uL, 50uL, 100uL, 200uL

Observed MW:

24kDa

Calculated MW:

25kDa

Applications:

WB IF

Reactivity:

Human, Mouse, Rat

Antibody Information

Recommended dilutions:

WB 1:500 - 1:2000 IF 1:50 - 1:200

Source:

Rabbit

Isotype:

IgG

Purification:

Affinity purification

Protein Background

Immunogen information

Gene ID:

17709

Uniprot

Synonyms:

MT-CO2; COII; MTCO2; COX2

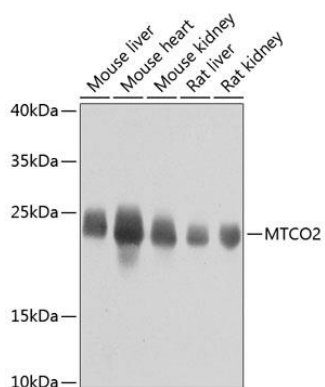
Immunogen:

A synthetic peptide corresponding to a sequence within amino acids 100-200 of mouse MTCO2 (NP_904331.1).

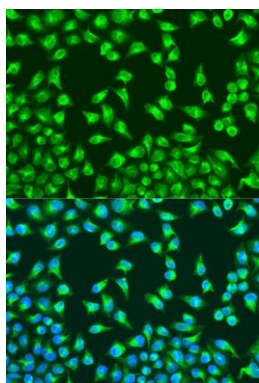
Storage:

Store at -20°C. Avoid freeze / thaw cycles. Buffer: PBS with 0.02% sodium azide, 50% glycerol, pH7.3.

Product Images



Western blot analysis of extracts of various cell lines, using MTCO2 antibody (CAB11154) at 1:800 dilution. Secondary antibody: HRP Goat Anti-Rabbit IgG (H+L) (CABS014) at 1:10000 dilution. Lysates/proteins: 25ug per lane. Blocking buffer: 3% nonfat dry milk in TBST. Detection: ECL Basic Kit (CABM00020). Exposure time: 15s.



Immunofluorescence analysis of U2OS cells using MTCO2 antibody (CAB11154) at dilution of 1:100. Blue: DAPI for nuclear staining.