

CD3 zeta Rabbit Monoclonal Antibody



CAB11157

Product Information

Size:

20uL, 50uL, 100uL, 200uL

Observed MW:

16KDa

Calculated MW:

kDa

Applications:

WB IHC

Reactivity:

Human

Protein Background

The protein encoded by this gene is T-cell receptor zeta, which together with T-cell receptor alpha/beta and gamma/delta heterodimers, and with CD3-gamma, -delta and -epsilon, forms the T-cell receptor-CD3 complex. The zeta chain plays an important role in coupling antigen recognition to several intracellular signal-transduction pathways. Low expression of the antigen results in impaired immune response. Two alternatively spliced transcript variants encoding distinct isoforms have been found for this gene. [provided by RefSeq, Jul 2008]

Immunogen information

Gene ID:

919

Uniprot

P20963

Synonyms:

CD3-ZETA; CD3H; CD3Q; CD3Z; IMD25; T3Z; TCRZ

Antibody Information

Recommended dilutions:

WB 1:500 - 1:2000 IHC 1:50
- 1:200

Source:

Rabbit

Isotype:

IgG

Purification:

Affinity purification

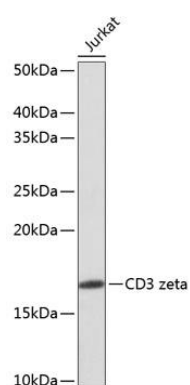
Immunogen:

A synthesized peptide derived from human CD3 zeta

Storage:

Store at -20°C. Avoid freeze / thaw cycles. Buffer: PBS with 0.02% sodium azide, 0.05% BSA, 50% glycerol, pH7.3.

Product Images



Western blot - CD3 zeta Rabbit mAb (CAB11157)