

# [KO Validated] ANXA1 Rabbit Polyclonal Antibody

## CAB1118



### Product Information

**Size:**

20uL, 50uL, 100uL, 200uL

**Observed MW:**

38kDa

**Calculated MW:**

38kDa

**Applications:**

WB IHC IF

**Reactivity:**

Human, Mouse

### Protein Background

This gene encodes a membrane-localized protein that binds phospholipids. This protein inhibits phospholipase A2 and has anti-inflammatory activity. Loss of function or expression of this gene has been detected in multiple tumors.

### Immunogen information

**Gene ID:**

301

**Uniprot**

P04083

**Synonyms:**

ANXA1; ANX1; LPC1

### Antibody Information

**Recommended dilutions:**

WB 1:500 - 1:2000 IHC 1:50  
- 1:200 IF 1:50 - 1:200

**Source:**

Rabbit

**Isotype:**

IgG

**Purification:**

Affinity purification

**Immunogen:**

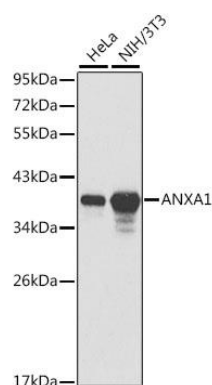
Recombinant fusion protein containing a sequence corresponding to amino acids 1-346 of human ANXA1 (NP\_000691.1).

**Storage:**

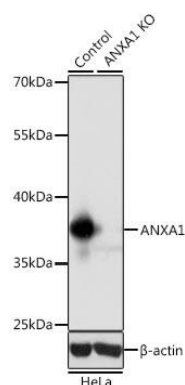
Store at -20°C. Avoid freeze / thaw cycles. Buffer: PBS with 0.02% sodium azide, 50% glycerol, pH7.3.

## Product Images

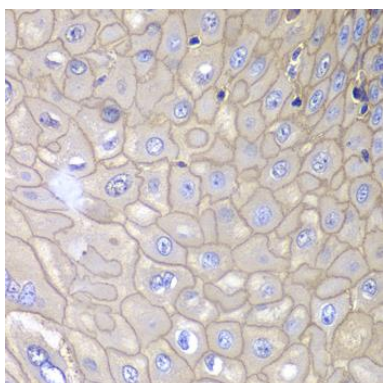
---



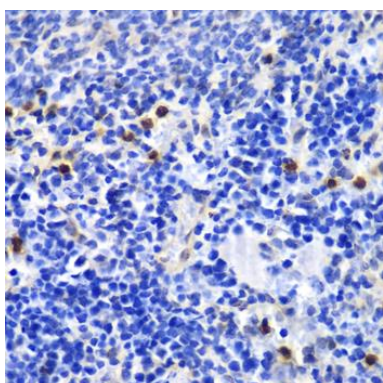
Western blot analysis of extracts of various cell lines, using ANXA1 antibody (CAB1118). Secondary antibody: HRP Goat Anti-Rabbit IgG (H+L) (CABS014) at 1:10000 dilution. Lysates/proteins: 25ug per lane. Blocking buffer: 3% nonfat dry milk in TBST.



Western blot analysis of extracts from normal (control) and ANXA1 knockout (KO) HeLa cells, using ANXA1 antibody (CAB1118) at 1:1000 dilution. Secondary antibody: HRP Goat Anti-Rabbit IgG (H+L) (CABS014) at 1:10000 dilution. Lysates/proteins: 25ug per lane. Blocking buffer: 3% nonfat dry milk in TBST. Detection: ECL Basic Kit (CABM00020). Exposure time: 1s.



Immunohistochemistry of paraffin-embedded human esophagus using ANXA1 antibody (CAB1118) at dilution of 1:100 (40x lens).



Immunohistochemistry of paraffin-embedded mouse spleen using ANXA1 antibody (CAB1118) at dilution of 1:100 (40x lens).