

Mannose Receptor/CD206 Rabbit Monoclonal Antibody

CAB11192



Product Information

Size:

20uL, 50uL, 100uL, 200uL

Observed MW:

166KDa

Calculated MW:

166kDa

Applications:

WB

Reactivity:

Human, Mouse

Protein Background

The recognition of complex carbohydrate structures on glycoproteins is an important part of several biological processes, including cell-cell recognition, serum glycoprotein turnover, and neutralization of pathogens. The protein encoded by this gene is a type I membrane receptor that mediates the endocytosis of glycoproteins by macrophages. The protein has been shown to bind high-mannose structures on the surface of potentially pathogenic viruses, bacteria, and fungi so that they can be neutralized by phagocytic engulfment.[provided by RefSeq, Sep 2015]

Immunogen information

Gene ID:

4360

Uniprot

P22897

Synonyms:

CD206; CLEC13D; CLEC13DL; MMR; MRC1L1; bA541I19.1; hMR

Antibody Information

Recommended dilutions:

WB 1:500 - 1:2000

Source:

Rabbit

Isotype:

IgG

Purification:

Affinity purification

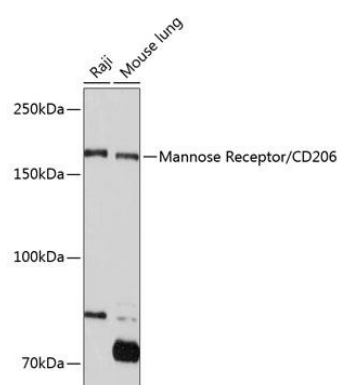
Immunogen:

A synthesized peptide derived from human Mannose Receptor/CD206

Storage:

Store at -20°C. Avoid freeze / thaw cycles. Buffer: PBS with 0.02% sodium azide, 0.05% BSA, 50% glycerol, pH7.3.

Product Images



Western blot - Mannose Receptor/CD206 Rabbit mAb (CAB11192)