

C3 Rabbit Monoclonal Antibody



CAB11196

Product Information

Size:

20uL, 50uL, 100uL, 200uL

Observed MW:

115KDa/187KDa

Calculated MW:

187kDa

Applications:

WB

Reactivity:

Human

Antibody Information

Recommended dilutions:

WB 1:500 - 1:2000

Source:

Rabbit

Isotype:

IgG

Purification:

Affinity purification

Protein Background

Complement component C3 plays a central role in the activation of complement system. Its activation is required for both classical and alternative complement activation pathways. The encoded preproprotein is proteolytically processed to generate alpha and beta subunits that form the mature protein, which is then further processed to generate numerous peptide products. The C3a peptide, also known as the C3a anaphylatoxin, modulates inflammation and possesses antimicrobial activity. Mutations in this gene are associated with atypical hemolytic uremic syndrome and age-related macular degeneration in human patients. [provided by RefSeq, Nov 2015]

Immunogen information

Gene ID:

718

Uniprot

P01024

Synonyms:

AHUS5; ARMD9; ASP; C3a; C3b; CPAMD1; HEL-S-62p

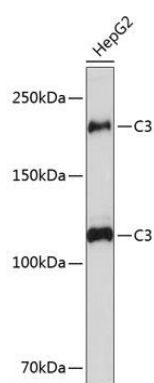
Immunogen:

A synthesized peptide derived from human C3

Storage:

Store at -20°C. Avoid freeze / thaw cycles. Buffer: PBS with 0.02% sodium azide, 0.05% BSA, 50% glycerol, pH7.3.

Product Images



Western blot analysis of extracts of HepG2 cells, using C3 Rabbit mAb (CAB11196) at 1:1000 dilution. Secondary antibody: HRP Goat Anti-Rabbit IgG (H+L) (CABS014) at 1:10000 dilution. Lysates/proteins: 25ug per lane. Blocking buffer: 3% nonfat dry milk in TBST. Detection: ECL Basic Kit (CABM00020). Exposure time: 60s.