

Galectin 3 Rabbit Monoclonal Antibody



CAB11198

Product Information

Size:

20uL, 50uL, 100uL, 200uL

Observed MW:

28KDa

Calculated MW:

30kDa

Applications:

WB IHC

Reactivity:

Human, Mouse, Rat

Protein Background

This gene encodes a member of the galectin family of carbohydrate binding proteins. Members of this protein family have an affinity for beta-galactosides. The encoded protein is characterized by an N-terminal proline-rich tandem repeat domain and a single C-terminal carbohydrate recognition domain. This protein can self-associate through the N-terminal domain allowing it to bind to multivalent saccharide ligands. This protein localizes to the extracellular matrix, the cytoplasm and the nucleus. This protein plays a role in numerous cellular functions including apoptosis, innate immunity, cell adhesion and T-cell regulation. The protein exhibits antimicrobial activity against bacteria and fungi. Alternate splicing results in multiple transcript variants.[provided by RefSeq, Oct 2014]

Immunogen information

Gene ID:

3958

Uniprot

P17931

Antibody Information

Recommended dilutions:

WB 1:500 - 1:2000 IHC 1:50
- 1:200

Source:

Rabbit

Synonyms:

CBP35; GAL3; GALBP; GALIG; L31; LGALS2; MAC2

Immunogen:

A synthesized peptide derived from human Galectin 3

Isotype:

IgG

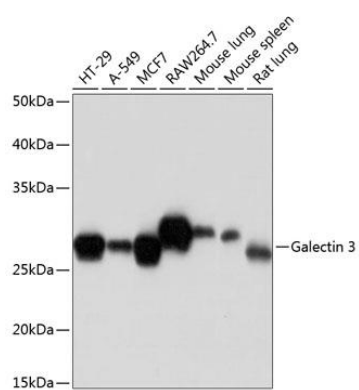
Storage:

Store at -20°C. Avoid freeze / thaw cycles. Buffer: PBS with 0.02% sodium azide, 0.05% BSA, 50% glycerol, pH7.3.

Purification:

Affinity purification

Product Images



Western blot - Galectin 3 Rabbit mAb (CAB11198)