

# Lipocalin-2 Rabbit Monoclonal Antibody



CAB11207

## Product Information

### Size:

20uL, 50uL, 100uL, 200uL

### Observed MW:

22KDa

### Calculated MW:

23kDa

### Applications:

WB

### Reactivity:

Human

## Antibody Information

### Recommended dilutions:

WB 1:500 - 1:2000

### Source:

Rabbit

### Isotype:

IgG

### Purification:

Affinity purification

## Protein Background

This gene encodes a protein that belongs to the lipocalin family. Members of this family transport small hydrophobic molecules such as lipids, steroid hormones and retinoids. The protein encoded by this gene is a neutrophil gelatinase-associated lipocalin and plays a role in innate immunity by limiting bacterial growth as a result of sequestering iron-containing siderophores. The presence of this protein in blood and urine is an early biomarker of acute kidney injury. This protein is thought to be involved in multiple cellular processes, including maintenance of skin homeostasis, and suppression of invasiveness and metastasis. Mice lacking this gene are more susceptible to bacterial infection than wild type mice. [provided by RefSeq, Sep 2015]

## Immunogen information

### Gene ID:

3934

### Uniprot

P80188

### Synonyms:

24p3; MSFI; NGAL; p25

### Immunogen:

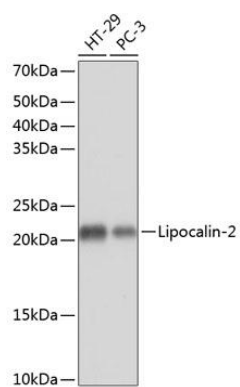
A synthesized peptide derived from human Lipocalin-2

### Storage:

Store at -20°C. Avoid freeze / thaw cycles. Buffer: PBS with 0.02% sodium azide, 0.05% BSA, 50% glycerol, pH7.3.

## Product Images

---



Western blot - Lipocalin-2 Rabbit mAb (CAB11207)