

MSH2 Rabbit Polyclonal Antibody



CAB1121

Product Information

Size:

20uL, 50uL, 100uL, 200uL

Observed MW:

25KDa

Calculated MW:

97kDa/104kDa

Applications:

WB IF IP

Reactivity:

Human, Mouse, Rat

Protein Background

This locus is frequently mutated in hereditary nonpolyposis colon cancer (HNPCC). When cloned, it was discovered to be a human homolog of the E. coli mismatch repair gene mutS, consistent with the characteristic alterations in microsatellite sequences (RER+ phenotype) found in HNPCC. Two transcript variants encoding different isoforms have been found for this gene.

Immunogen information

Gene ID:

4436

Uniprot

P43246

Synonyms:

MSH2; COCA1; FCC1; HNPCC; HNPCC1; LCFS2

Antibody Information

Recommended dilutions:

WB 1:500 - 1:2000 IF 1:50 -
1:200 IP 1:20 - 1:50

Source:

Rabbit

Isotype:

IgG

Purification:

Affinity purification

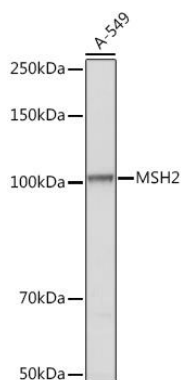
Immunogen:

Recombinant fusion protein containing a sequence corresponding to amino acids 1-300 of human MSH2 (NP_000242.1).

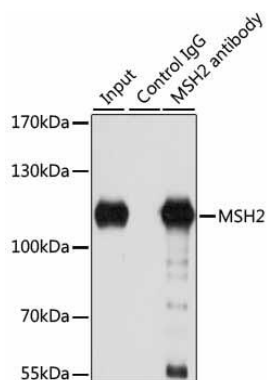
Storage:

Store at -20°C. Avoid freeze / thaw cycles. Buffer: PBS with 0.02% sodium azide, 50% glycerol, pH7.3.

Product Images



Western blot analysis of extracts of A-549 cells, using MSH2 Rabbit pAb (CAB1121) at 1:2000 dilution. Secondary antibody: HRP Goat Anti-Rabbit IgG (H+L) (CABS014) at 1:10000 dilution. Lysates/proteins: 25ug per lane. Blocking buffer: 3% nonfat dry milk in TBST. Detection: ECL Basic Kit (CABM00020). Exposure time: 5s.



Immunoprecipitation analysis of 150ug extracts of A549 cells using 3ug MSH2 antibody (CAB1121). Western blot was performed from the immunoprecipitate using MSH2 antibody (CAB1121) at a dilution of 1:1000.