

AQP4 Rabbit Monoclonal Antibody



CAB11210

Product Information

Size:

20uL, 50uL, 100uL, 200uL

Observed MW:

30KDa

Calculated MW:

kDa

Applications:

WB IHC IF

Reactivity:

Mouse, Rat

Antibody Information

Recommended dilutions:

WB 1:500 - 1:2000 IHC 1:50
- 1:200 IF 1:50 - 1:200

Source:

Rabbit

Isotype:

IgG

Purification:

Affinity purification

Protein Background

This gene encodes a member of the aquaporin family of intrinsic membrane proteins that function as water-selective channels in the plasma membranes of many cells. This protein is the predominant aquaporin found in brain and has an important role in brain water homeostasis. Alternatively spliced transcript variants encoding different isoforms have been described for this gene. A recent study provided evidence for translational readthrough in this gene and expression of an additional C-terminally extended isoform via the use of an alternative in-frame translation termination codon. [provided by RefSeq, Dec 2015]

Immunogen information

Gene ID:

361

Uniprot

P55087

Synonyms:

MIWC; WCH4

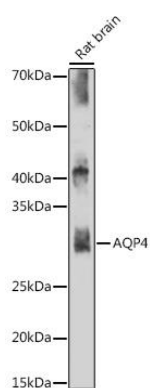
Immunogen:

A synthesized peptide derived from human AQP4

Storage:

Store at -20°C. Avoid freeze / thaw cycles. Buffer: PBS with 0.02% sodium azide, 0.05% BSA, 50% glycerol, pH7.3.

Product Images



Western blot - AQP4 Rabbit mAb (CAB11210)