

# TLR2 Rabbit Polyclonal Antibody



CAB11225

---

## Product Information

### Size:

20uL, 50uL, 100uL, 200uL

### Observed MW:

105kDa

### Calculated MW:

89kDa

### Applications:

WB IHC IF

### Reactivity:

Human, Mouse, Rat

## Antibody Information

### Recommended dilutions:

WB 1:500 - 1:2000 IHC 1:50  
- 1:200 IF 1:50 - 1:100

### Source:

Rabbit

### Isotype:

IgG

### Purification:

Affinity purification

## Protein Background

The protein encoded by this gene is a member of the Toll-like receptor (TLR) family which plays a fundamental role in pathogen recognition and activation of innate immunity. TLRs are highly conserved from *Drosophila* to humans and share structural and functional similarities. This protein is a cell-surface protein that can form heterodimers with other TLR family members to recognize conserved molecules derived from microorganisms known as pathogen-associated molecular patterns (PAMPs). Activation of TLRs by PAMPs leads to an up-regulation of signaling pathways to modulate the host's inflammatory response. This gene is also thought to promote apoptosis in response to bacterial lipoproteins. This gene has been implicated in the pathogenesis of several autoimmune diseases. Alternative splicing results in multiple transcript variants.

## Immunogen information

### Gene ID:

7097

### Uniprot

O60603

### Synonyms:

CD282; TIL4; TLR2

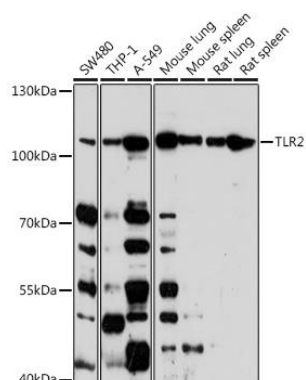
### Immunogen:

A synthetic peptide of human TLR2

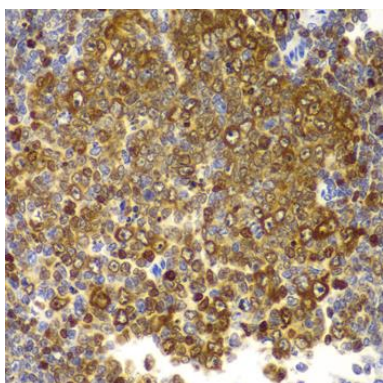
### Storage:

Store at -20°C. Avoid freeze / thaw cycles. Buffer: PBS with 0.02% sodium azide, 50% glycerol, pH7.3.

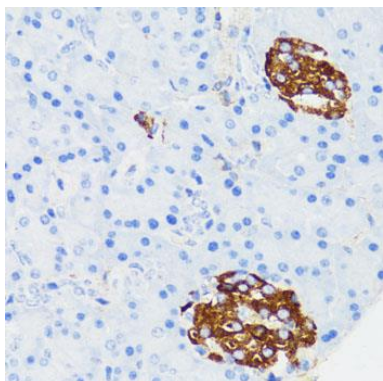
## Product Images



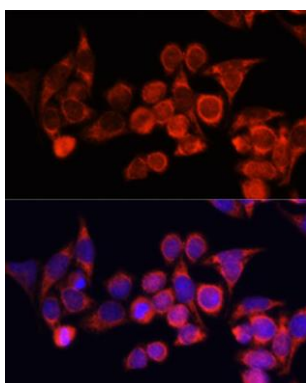
Western blot analysis of extracts of various cell lines, using TLR2 antibody (CAB11225) at 1:1000 dilution. Secondary antibody: HRP Goat Anti-Rabbit IgG (H+L) (CABS014) at 1:10000 dilution. Lysates/proteins: 25ug per lane. Blocking buffer: 3% nonfat dry milk in TBST. Detection: ECL Basic Kit (CABM00020). Exposure time: 90s.



Immunohistochemistry of paraffin-embedded rat spleen using TLR2 antibody (CAB11225) at dilution of 1:100 (40x lens).



Immunohistochemistry of paraffin-embedded mouse islets of Langerhans using TLR2 antibody (CAB11225) at dilution of 1:150 (40x lens).



Immunofluorescence analysis of HeLa cells using TLR2 antibody (CAB11225) at dilution of 1:100. Blue: DAPI for nuclear staining.