

# SQSTM1 / p62 Rabbit Polyclonal Antibody



CAB11247

## Product Information

### Size:

20uL, 50uL, 100uL, 200uL

### Observed MW:

62kDa

### Calculated MW:

38kDa/47kDa

### Applications:

WB IHC IF

### Reactivity:

Human, Mouse, Rat

## Antibody Information

### Recommended dilutions:

WB 1:500 - 1:2000 IHC 1:50  
- 1:200 IF 1:50 - 1:200

### Source:

Rabbit

### Isotype:

IgG

### Purification:

Affinity purification

## Protein Background

This gene encodes a multifunctional protein that binds ubiquitin and regulates activation of the nuclear factor kappa-B (NF- $\kappa$ B) signaling pathway. The protein functions as a scaffolding/adaptor protein in concert with TNF receptor-associated factor 6 to mediate activation of NF- $\kappa$ B in response to upstream signals. Alternatively spliced transcript variants encoding either the same or different isoforms have been identified for this gene. Mutations in this gene result in sporadic and familial Paget disease of bone.

## Immunogen information

### Gene ID:

8878

### Uniprot

Q13501

### Synonyms:

SQSTM1; A170; DMRV; FTDALS3; NADGP; OSIL; PDB3; ZIP3; p60;  
p62; p62B

### Immunogen:

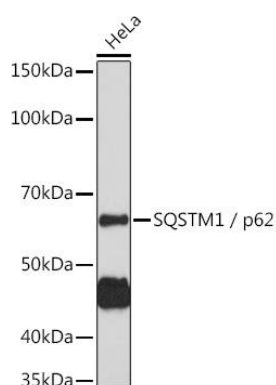
Recombinant fusion protein containing a sequence corresponding to amino acids 1-240 of human SQSTM1 / p62 (NP\_003891.1).

### Storage:

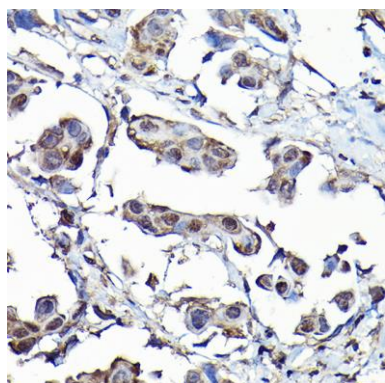
Store at -20°C. Avoid freeze / thaw cycles. Buffer: PBS with 0.02% sodium azide, 50% glycerol, pH7.3.

## Product Images

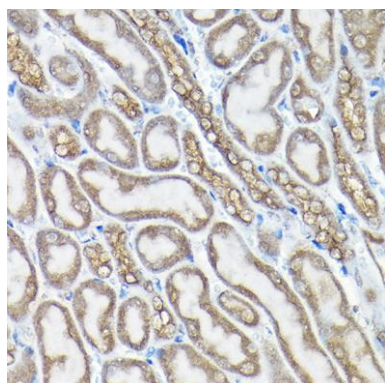
---



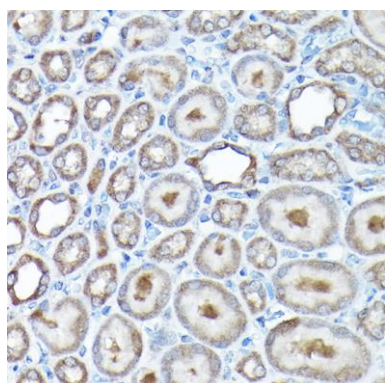
Western blot analysis of extracts of HeLa cells, using SQSTM1 / p62 antibody (CAB11247) at 1:1000 dilution. Secondary antibody: HRP Goat Anti-Rabbit IgG (H+L) (CABS014) at 1:10000 dilution. Lysates/proteins: 25ug per lane. Blocking buffer: 3% nonfat dry milk in TBST. Detection: ECL Basic Kit (CABM00020). Exposure time: 3min.



Immunohistochemistry of paraffin-embedded human breast cancer using SQSTM1 / p62 Rabbit pAb (CAB11247) at dilution of 1:150 (40x lens).



Immunohistochemistry of paraffin-embedded mouse kidney using SQSTM1 / p62 Rabbit pAb (CAB11247) at dilution of 1:150 (40x lens).



Immunohistochemistry of paraffin-embedded rat kidney using SQSTM1 / p62 Rabbit pAb (CAB11247) at dilution of 1:150 (40x lens).