

# SERPINC1 Rabbit Monoclonal Antibody



CAB11249

---

## Product Information

### Size:

20uL, 50uL, 100uL, 200uL

### Observed MW:

58kDa

### Calculated MW:

53kDa

### Applications:

WB IHC

### Reactivity:

Human, Mouse, Rat

## Antibody Information

### Recommended dilutions:

WB 1:500 - 1:2000 IHC 1:50  
- 1:200

### Source:

Rabbit

### Isotype:

IgG

### Purification:

Affinity purification

## Protein Background

The protein encoded by this gene is a plasma protease inhibitor and a member of the serpin superfamily. This protein inhibits thrombin as well as other activated serine proteases of the coagulation system, and it regulates the blood coagulation cascade. The protein includes two functional domains: the heparin binding-domain at the N-terminus of the mature protein, and the reactive site domain at the C-terminus. The inhibitory activity is enhanced by the presence of heparin. More than 120 mutations have been identified for this gene, many of which are known to cause antithrombin-III deficiency. [provided by RefSeq, Jul 2009]

## Immunogen information

### Gene ID:

462

### Uniprot

P01008

### Synonyms:

AT3; AT3D; ATIII; THPH7

### Immunogen:

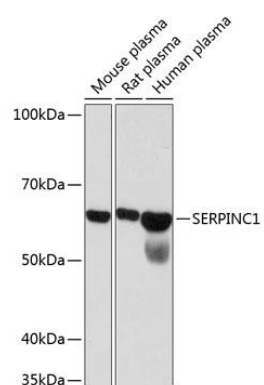
A synthesized peptide derived from human SERPINC1

### Storage:

Store at -20°C. Avoid freeze / thaw cycles. Buffer: PBS with 0.02% sodium azide, 0.05% BSA, 50% glycerol, pH7.3.

## Product Images

---



Western blot - SERPINC1 Rabbit mAb (CAB11249)