

# Grp75 Rabbit Monoclonal Antibody



CAB11256

---

## Product Information

### Size:

20uL, 50uL, 100uL, 200uL

### Observed MW:

74KDa

### Calculated MW:

74kDa

### Applications:

WB

### Reactivity:

Human, Mouse, Rat

## Antibody Information

### Recommended dilutions:

WB 1:500 - 1:2000

### Source:

Rabbit

### Isotype:

IgG

### Purification:

Affinity purification

## Protein Background

This gene encodes a member of the heat shock protein 70 gene family. The encoded protein is primarily localized to the mitochondria but is also found in the endoplasmic reticulum, plasma membrane and cytoplasmic vesicles. This protein is a heat-shock cognate protein. This protein plays a role in cell proliferation, stress response and maintenance of the mitochondria. A pseudogene of this gene is found on chromosome 2.[provided by RefSeq, May 2010]

## Immunogen information

### Gene ID:

3313

### Uniprot

P38646

### Synonyms:

CRP40; CSA; EVPLS; GRP-75; GRP75; HEL-S-124m; HSPA9B; MOT; MOT2; MTHSP75; PBP74; SAAN; SIDBA4

### Immunogen:

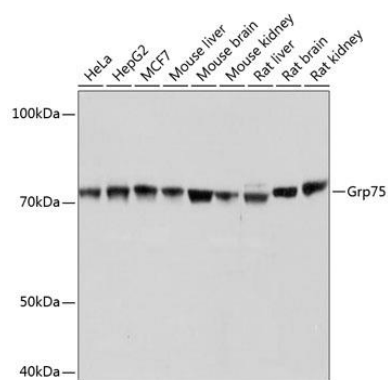
A synthesized peptide derived from human Grp75

### Storage:

Store at -20°C. Avoid freeze / thaw cycles. Buffer: PBS with 0.02% sodium azide, 0.05% BSA, 50% glycerol, pH7.3.

## Product Images

---



Western blot - Grp75 Rabbit mAb (CAB11256)