

# PHPT1 Rabbit Polyclonal Antibody



CAB1127

## Product Information

### Size:

20uL, 50uL, 100uL, 200uL

### Observed MW:

13kDa

### Calculated MW:

13kDa

### Applications:

WB IHC

### Reactivity:

Human, Mouse, Rat

## Protein Background

This gene encodes an enzyme that catalyzes the reversible dephosphorylation of histidine residues in proteins. It may be involved in the dephosphorylation of G-beta and ATP citrate lyase and in negatively regulating CD4 T lymphocytes by dephosphorylation and inhibition of KCa3.1 channels. Alternative splicing results in multiple transcript variants.

## Immunogen information

### Gene ID:

29085

### Uniprot

Q9NRX4

### Synonyms:

PHPT1; CGI-202; HEL-S-132P; HSPC141; PHP; PHP14

## Antibody Information

### Recommended dilutions:

WB 1:500 - 1:2000 IHC 1:50  
- 1:200

### Source:

Rabbit

### Isotype:

IgG

### Purification:

Affinity purification

### Immunogen:

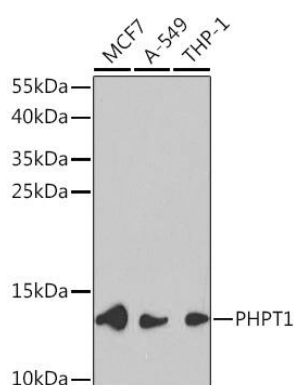
Recombinant fusion protein containing a sequence corresponding to amino acids 1-125 of human PHPT1 (NP\_054891.2).

### Storage:

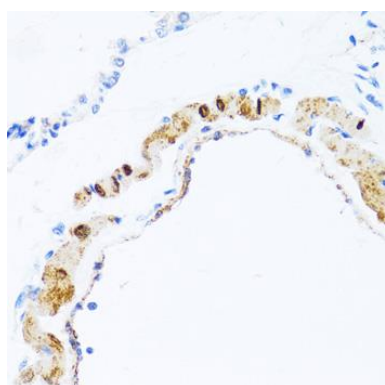
Store at -20°C. Avoid freeze / thaw cycles. Buffer: PBS with 0.02% sodium azide, 50% glycerol, pH7.3.

## Product Images

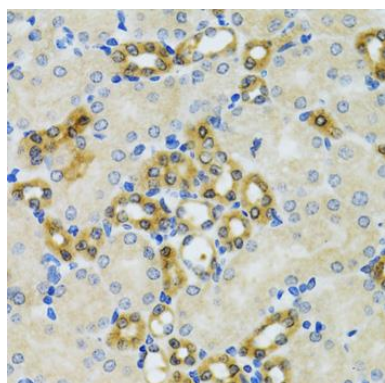
---



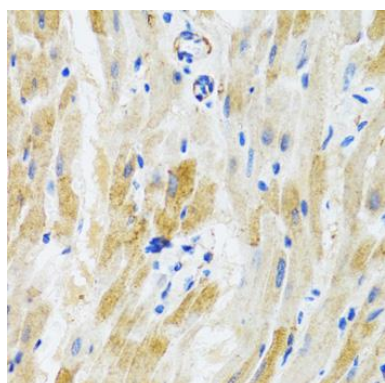
Western blot analysis of extracts of various cell lines, using PHPT1 Rabbit pAb (CAB1127) at 1:1000 dilution. Secondary antibody: HRP Goat Anti-Rabbit IgG (H+L) (CABS014) at 1:10000 dilution. Lysates/proteins: 25ug per lane. Blocking buffer: 3% nonfat dry milk in TBST. Detection: ECL Basic Kit (CABM00020).



Immunohistochemistry of paraffin-embedded rat lung using PHPT1 antibody (CAB1127) at dilution of 1:100 (40x lens).



Immunohistochemistry of paraffin-embedded mouse kidney using PHPT1 antibody (CAB1127) at dilution of 1:100 (40x lens).



Immunohistochemistry of paraffin-embedded mouse heart using PHPT1 antibody (CAB1127) at dilution of 1:100 (40x lens).