

PD-L1 Rabbit Polyclonal Antibody



CAB11273

Product Information

Size:

20uL, 50uL, 100uL, 200uL

Observed MW:

40-50KDa

Calculated MW:

20kDa/33kDa

Applications:

WB IHC IF

Reactivity:

Human, Mouse, Rat

Antibody Information

Recommended dilutions:

WB 1:500 - 1:2000 IHC 1:50
- 1:200 IF 1:20 - 1:100

Source:

Rabbit

Isotype:

IgG

Purification:

Affinity purification

Protein Background

This gene encodes an immune inhibitory receptor ligand that is expressed by hematopoietic and non-hematopoietic cells, such as T cells and B cells and various types of tumor cells. The encoded protein is a type I transmembrane protein that has immunoglobulin V-like and C-like domains. Interaction of this ligand with its receptor inhibits T-cell activation and cytokine production. During infection or inflammation of normal tissue, this interaction is important for preventing autoimmunity by maintaining homeostasis of the immune response. In tumor microenvironments, this interaction provides an immune escape for tumor cells through cytotoxic T-cell inactivation. Expression of this gene in tumor cells is considered to be prognostic in many types of human malignancies, including colon cancer and renal cell carcinoma. Alternative splicing results in multiple transcript variants.

Immunogen information

Gene ID:

29126

Uniprot

Q9NZQ7

Synonyms:

B7-H; B7H1; PDL1; PD-L1; PDCD1L1; PDCD1LG1; CD274

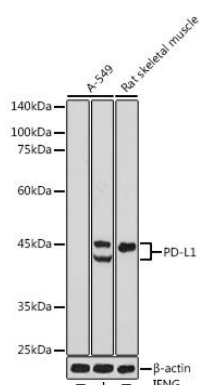
Immunogen:

Recombinant fusion protein containing a sequence corresponding to amino acids 19-238 of human PD-L1 (NP_054862.1).

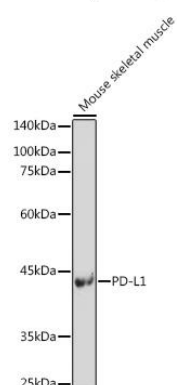
Storage:

Store at -20°C. Avoid freeze / thaw cycles. Buffer: PBS with 0.02% sodium azide, 50% glycerol, pH7.3.

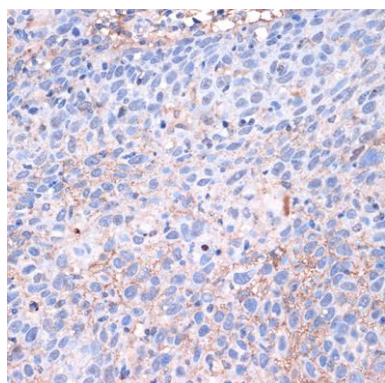
Product Images



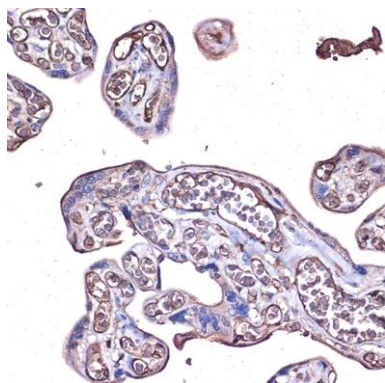
Western blot analysis of extracts of various cell lines, using PD-L1 antibody (CAB11273) at 1:500 dilution. A-549 cells were treated by IFNG (100 ng/mL) at 37°C for 48 hours. Secondary antibody: HRP Goat Anti-Rabbit IgG (H+L) (CABS014) at 1:10000 dilution. Lysates/proteins: 25ug per lane. Blocking buffer: 3% nonfat dry milk in TBST. Detection: ECL Basic Kit (CABM00020). Exposure time: 180s.



Western blot analysis of extracts of Mouse skeletal muscle, using PD-L1 antibody (CAB11273) at 1:500 dilution. Secondary antibody: HRP Goat Anti-Rabbit IgG (H+L) (CABS014) at 1:10000 dilution. Lysates/proteins: 25ug per lane. Blocking buffer: 3% nonfat dry milk in TBST. Detection: ECL Enhanced Kit (CABM00021). Exposure time: 180s.



Immunohistochemistry of paraffin-embedded human esophageal cancer using PD-L1 Rabbit pAb (CAB11273) at dilution of 1:100 (40x lens).



Immunohistochemistry of paraffin-embedded human placenta using PD-L1 Rabbit pAb (CAB11273) at dilution of 1:100 (40x lens).