

CD55 Rabbit Monoclonal Antibody



CAB11283

Product Information

Size:

20uL, 50uL, 100uL, 200uL

Observed MW:

78KDa

Calculated MW:

55-80kDa

Applications:

WB IHC

Reactivity:

Human

Protein Background

This gene encodes a glycoprotein involved in the regulation of the complement cascade. Binding of the encoded protein to complement proteins accelerates their decay, thereby disrupting the cascade and preventing damage to host cells. Antigens present on this protein constitute the Cromer blood group system (CROM). Alternative splicing results in multiple transcript variants. The predominant transcript variant encodes a membrane-bound protein, but alternatively spliced transcripts may produce soluble proteins. [provided by RefSeq, Jul 2014]

Immunogen information

Gene ID:

1604

Uniprot

P08174

Synonyms:

CR; CROM; DAF; TC

Antibody Information

Recommended dilutions:

WB 1:500 - 1:2000 IHC 1:50
- 1:200

Source:

Rabbit

Isotype:

IgG

Purification:

Affinity purification

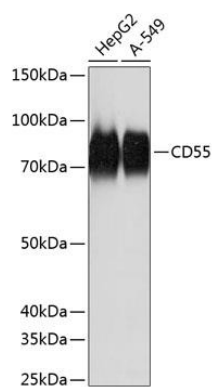
Immunogen:

A synthesized peptide derived from human CD55

Storage:

Store at -20°C. Avoid freeze / thaw cycles. Buffer: PBS with 0.02% sodium azide, 0.05% BSA, 50% glycerol, pH7.3.

Product Images



Western blot - CD55 Rabbit mAb (CAB11283)