

APOA1 Rabbit Polyclonal Antibody



CAB1129

Product Information

Size:

20uL, 50uL, 100uL, 200uL

Observed MW:

31kDa

Calculated MW:

30kDa

Applications:

WB IHC IF

Reactivity:

Human, Mouse

Antibody Information

Recommended dilutions:

WB 1:500 - 1:2000 IHC 1:50
- 1:100 IF 1:50 - 1:200

Source:

Rabbit

Isotype:

IgG

Purification:

Affinity purification

Protein Background

This gene encodes apolipoprotein A-I, which is the major protein component of high density lipoprotein (HDL) in plasma. The encoded preprotein is proteolytically processed to generate the mature protein, which promotes cholesterol efflux from tissues to the liver for excretion, and is a cofactor for lecithin cholesterolacyltransferase (LCAT), an enzyme responsible for the formation of most plasma cholesteryl esters. This gene is closely linked with two other apolipoprotein genes on chromosome 11. Defects in this gene are associated with HDL deficiencies, including Tangier disease, and with systemic non-neuropathic amyloidosis. Alternative splicing results in multiple transcript variants, at least one of which encodes a preprotein.

Immunogen information

Gene ID:

335

Uniprot

P02647

Synonyms:

APOA1; apo(a)

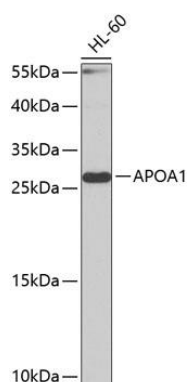
Immunogen:

Recombinant fusion protein containing a sequence corresponding to amino acids 20-267 of human APOA1 (NP_000030.1).

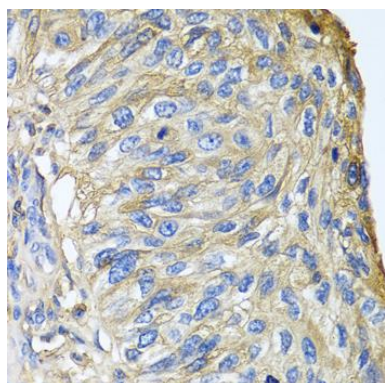
Storage:

Store at -20°C. Avoid freeze / thaw cycles. Buffer: PBS with 0.02% sodium azide, 50% glycerol, pH7.3.

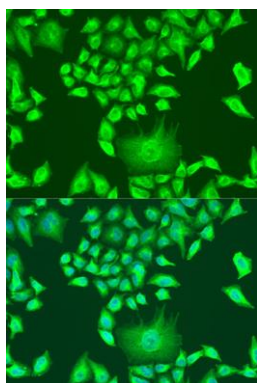
Product Images



Western blot analysis of extracts of HL-60 cells, using APOA1 antibody (CAB1129) at 1:1000 dilution. Secondary antibody: HRP Goat Anti-Rabbit IgG (H+L) (CABS014) at 1:10000 dilution. Lysates/proteins: 25ug per lane. Blocking buffer: 3% nonfat dry milk in TBST. Detection: ECL Basic Kit (CABM00020). Exposure time: 30s.



Immunohistochemistry of paraffin-embedded human prostate cancer using APOA1 antibody (CAB1129) at dilution of 1:100 (40x lens).



Immunofluorescence analysis of U2OS cells using APOA1 antibody (CAB1129) at dilution of 1:100. Blue: DAPI for nuclear staining.