

GC1q R Rabbit Monoclonal Antibody



CAB11292

Product Information

Size:

20uL, 50uL, 100uL, 200uL

Observed MW:

31KDa

Calculated MW:

31kDa

Applications:

WB IHC

Reactivity:

Human, Mouse, Rat

Protein Background

The human complement subcomponent C1q associates with C1r and C1s in order to yield the first component of the serum complement system. The protein encoded by this gene is known to bind to the globular heads of C1q molecules and inhibit C1 activation. This protein has also been identified as the p32 subunit of pre-mRNA splicing factor SF2, as well as a hyaluronic acid-binding protein. [provided by RefSeq, Jul 2008]

Immunogen information

Gene ID:

708

Uniprot

Q07021

Synonyms:

GC1QBP; HABP1; SF2p32; gC1Q-R; gC1qR; p32

Antibody Information

Recommended dilutions:

WB 1:500 - 1:2000 IHC 1:50
- 1:200

Source:

Rabbit

Isotype:

IgG

Purification:

Affinity purification

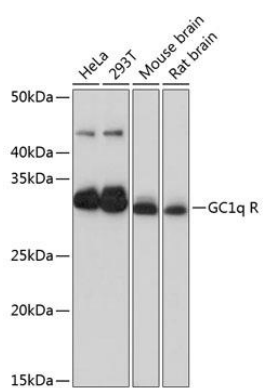
Immunogen:

A synthesized peptide derived from human GC1q R

Storage:

Store at -20°C. Avoid freeze / thaw cycles. Buffer: PBS with 0.02% sodium azide, 0.05% BSA, 50% glycerol, pH7.3.

Product Images



Western blot - GC1q R Rabbit mAb (CAB11292)