

AMACR Rabbit Polyclonal Antibody



CAB1130

Product Information

Size:

20uL, 50uL, 100uL, 200uL

Observed MW:

42kDa/43kDa

Calculated MW:

22kDa/25kDa/42kDa/43kDa

Applications:

WB IHC IF

Reactivity:

Human, Mouse, Rat

Antibody Information

Recommended dilutions:

WB 1:500 - 1:2000 IHC 1:50
- 1:200 IF 1:50 - 1:200

Source:

Rabbit

Isotype:

IgG

Purification:

Affinity purification

Protein Background

This gene encodes a racemase. The encoded enzyme interconverts pristanoyl-CoA and C27-bile acylCoAs between their (R)- and (S)-stereoisomers. The conversion to the (S)-stereoisomers is necessary for degradation of these substrates by peroxisomal beta-oxidation. Encoded proteins from this locus localize to both mitochondria and peroxisomes. Mutations in this gene may be associated with adult-onset sensorimotor neuropathy, pigmentary retinopathy, and adrenomyeloneuropathy due to defects in bile acid synthesis. Alternatively spliced transcript variants have been described. Read-through transcription also exists between this gene and the upstream neighboring C1QTNF3 (C1q and tumor necrosis factor related protein 3) gene.

Immunogen information

Gene ID:

23600

Uniprot

Q9UHK6

Synonyms:

AMACR; AMACRD; CBAS4; P504S; RACE; RM

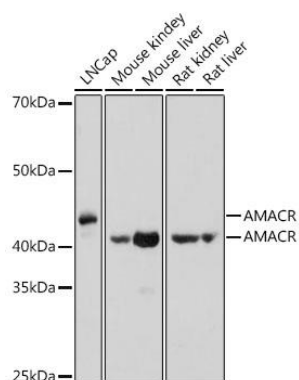
Immunogen:

Recombinant fusion protein containing a sequence corresponding to amino acids 1-198 of human AMACR (NP_976316.1).

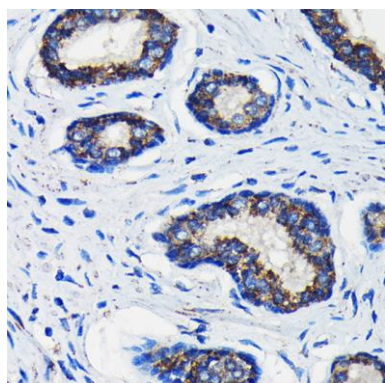
Storage:

Store at -20°C. Avoid freeze / thaw cycles. Buffer: PBS with 0.02% sodium azide, 50% glycerol, pH7.3.

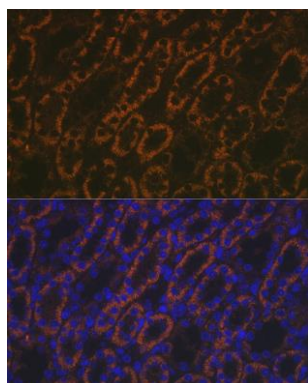
Product Images



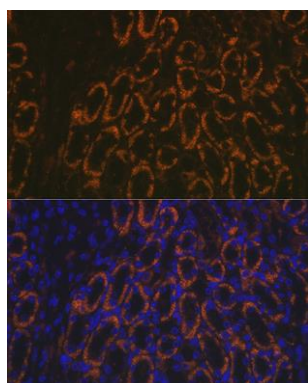
Western blot analysis of extracts of various cell lines, using AMACR antibody (CAB1130) at 1:1000 dilution. Secondary antibody: HRP Goat Anti-Rabbit IgG (H+L) (CABS014) at 1:10000 dilution. Lysates/proteins: 25ug per lane. Blocking buffer: 3% nonfat dry milk in TBST. Detection: ECL Basic Kit (CABM00020). Exposure time: 1s.



Immunohistochemistry of paraffin-embedded human prostate cancer using AMACR Rabbit pAb (CAB1130) at dilution of 1:100 (40x lens).



Immunofluorescence analysis of rat kidney using AMACR Rabbit pAb (CAB1130) at dilution of 1:100 (40x lens). Blue: DAPI for nuclear staining.



Immunofluorescence analysis of mouse kidney using AMACR Rabbit pAb (CAB1130) at dilution of 1:100 (40x lens). Blue: DAPI for nuclear staining.