

# Bcl-2 Rabbit Polyclonal Antibody



CAB11313

---

## Product Information

### Size:

20uL, 50uL, 100uL, 200uL

### Observed MW:

26kDa

### Calculated MW:

22kDa/26kDa

### Applications:

WB IHC

### Reactivity:

Human, Mouse, Rat

## Protein Background

This gene encodes an integral outer mitochondrial membrane protein that blocks the apoptotic death of some cells such as lymphocytes. Constitutive expression of BCL2, such as in the case of translocation of BCL2 to Ig heavy chain locus, is thought to be the cause of follicular lymphoma. Alternative splicing results in multiple transcript variants.

## Immunogen information

### Gene ID:

596

### Uniprot

P10415

### Synonyms:

Bcl-2; PPP1R50; BCL2

## Antibody Information

### Recommended dilutions:

WB 1:200 - 1:500 IHC 1:20 - 1:100

### Source:

Rabbit

### Isotype:

IgG

### Purification:

Affinity purification

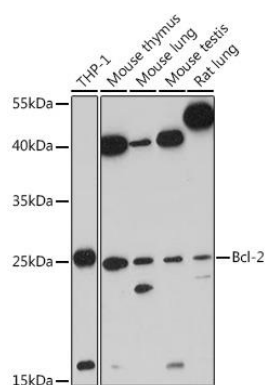
### Immunogen:

A synthetic peptide corresponding to a sequence within amino acids 1-100 of human Bcl-2 (NP\_000624.2).

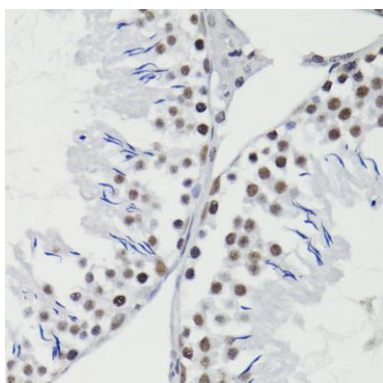
### Storage:

Store at -20°C. Avoid freeze / thaw cycles. Buffer: PBS with 0.02% sodium azide, 50% glycerol, pH7.3.

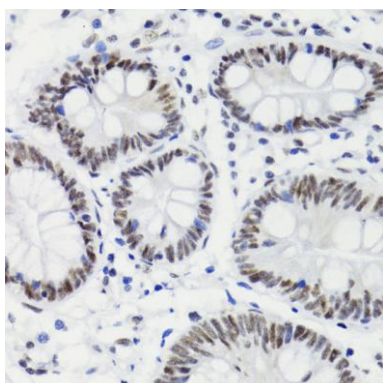
## Product Images



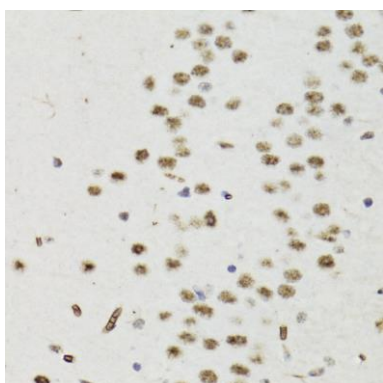
Western blot analysis of extracts of various cell lines, using Bcl-2 antibody (CAB11313) at 1:1000 dilution. Secondary antibody: HRP Goat Anti-Rabbit IgG (H+L) (CABS014) at 1:10000 dilution. Lysates/proteins: 25ug per lane. Blocking buffer: 3% nonfat dry milk in TBST. Detection: ECL Basic Kit (CABM00020). Exposure time: 120s.



Immunohistochemistry of paraffin-embedded rat testis using Phospho-Bcl-2-T56 antibody (CAB11313) at dilution of 1:200 (40x lens).



Immunohistochemistry of paraffin-embedded human stomach using Phospho-Bcl-2-T56 antibody (CAB11313) at dilution of 1:200 (40x lens).



Immunohistochemistry of paraffin-embedded mouse brain using Phospho-Bcl-2-T56 antibody (CAB11313) at dilution of 1:200 (40x lens).