

# BMP4 Rabbit Polyclonal Antibody



CAB11315

## Product Information

### Size:

20uL, 50uL, 100uL, 200uL

### Observed MW:

### Calculated MW:

46kDa

### Applications:

WB IHC IF

### Reactivity:

Human, Mouse, Rat

## Antibody Information

### Recommended dilutions:

WB 1:500 - 1:2000 IHC 1:50  
- 1:200 IF 1:50 - 1:200

### Source:

Rabbit

### Isotype:

IgG

### Purification:

Affinity purification

## Protein Background

This gene encodes a secreted ligand of the TGF-beta (transforming growth factor-beta) superfamily of proteins. Ligands of this family bind various TGF-beta receptors leading to recruitment and activation of SMAD family transcription factors that regulate gene expression. The encoded preproprotein is proteolytically processed to generate each subunit of the disulfide-linked homodimer. This protein regulates heart development and adipogenesis. Mutations in this gene are associated with orofacial cleft and microphthalmia in human patients. The encoded protein may also be involved in the pathology of multiple cardiovascular diseases and human cancers.

## Immunogen information

### Gene ID:

652

### Uniprot

P12644

### Synonyms:

BMP4; BMP2B; BMP2B1; MCOPS6; OFC11; ZYME

### Immunogen:

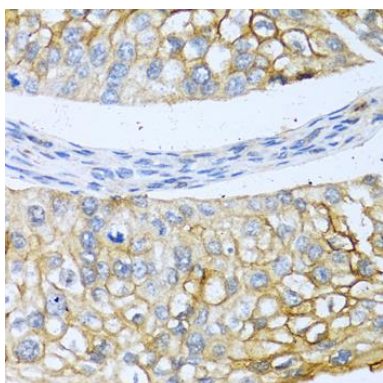
Recombinant fusion protein containing a sequence corresponding to amino acids 1-408 of human BMP4 (NP\_570912.2).

### Storage:

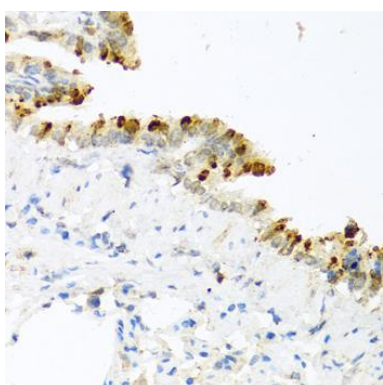
Store at -20°C. Avoid freeze / thaw cycles. Buffer: PBS with 0.02% sodium azide, 50% glycerol, pH7.3.

## Product Images

---



Immunohistochemistry of paraffin-embedded human prostate cancer using BMP4 antibody (CAB11315) at dilution of 1:100 (40x lens).



Immunohistochemistry of paraffin-embedded mouse lung using BMP4 antibody (CAB11315) at dilution of 1:100 (40x lens).