

EMD Rabbit Polyclonal Antibody



CAB1132

Product Information

Size:

20uL, 50uL, 100uL, 200uL

Observed MW:

35kDa

Calculated MW:

28kDa

Applications:

WB IHC IF

Reactivity:

Human, Mouse

Protein Background

Emerin is a serine-rich nuclear membrane protein and a member of the nuclear lamina-associated protein family. It mediates membrane anchorage to the cytoskeleton. Dreifuss-Emery muscular dystrophy is an X-linked inherited degenerative myopathy resulting from mutation in the emerin gene.

Immunogen information

Gene ID:

2010

Uniprot

P50402

Synonyms:

EMD; EDMD; LEMD5; STA; emerin

Antibody Information

Recommended dilutions:

WB 1:500 - 1:2000 IHC 1:50
- 1:200 IF 1:20 - 1:100

Source:

Rabbit

Isotype:

IgG

Purification:

Affinity purification

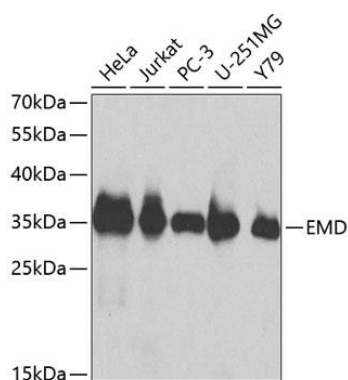
Immunogen:

Recombinant fusion protein containing a sequence corresponding to amino acids 1-220 of human EMD (NP_000108.1).

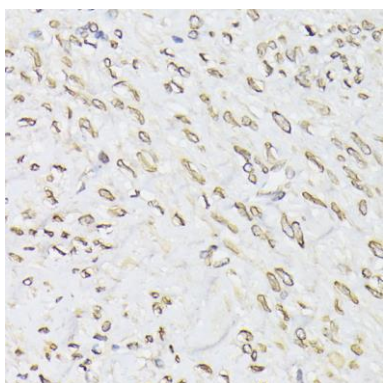
Storage:

Store at -20°C. Avoid freeze / thaw cycles. Buffer: PBS with 0.02% sodium azide, 50% glycerol, pH7.3.

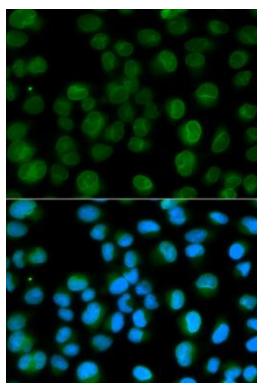
Product Images



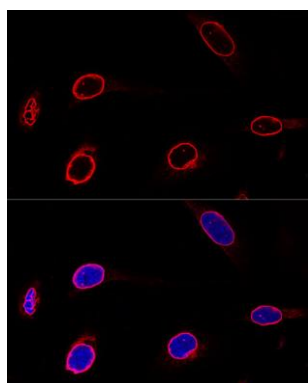
Western blot analysis of extracts of various cell lines, using EMD antibody (CAB1132) at 1:1000 dilution. Secondary antibody: HRP Goat Anti-Rabbit IgG (H+L) (CABS014) at 1:10000 dilution. Lysates/proteins: 25ug per lane. Blocking buffer: 3% nonfat dry milk in TBST.



Immunohistochemistry of paraffin-embedded human uterus using EMD antibody (CAB1132) at dilution of 1:100 (40x lens).



Immunofluorescence analysis of HeLa cells using EMD antibody (CAB1132). Blue: DAPI for nuclear staining.



Confocal immunofluorescence analysis of U-2 OS cells using EMD Polyclonal Antibody (CAB1132) at dilution of 1:100. Blue: DAPI for nuclear staining.