

# MCM7 Rabbit Monoclonal Antibody



CAB11325

## Product Information

### Size:

20uL, 50uL, 100uL, 200uL

### Observed MW:

81kDa

### Calculated MW:

81kDa

### Applications:

WB IHC IF IP

### Reactivity:

Human, Rat

## Antibody Information

### Recommended dilutions:

WB 1:500 - 1:2000 IHC 1:50  
- 1:200 IF 1:50 - 1:200 IP  
1:50 - 1:200

### Source:

Rabbit

### Isotype:

IgG

### Purification:

Affinity purification

## Protein Background

The protein encoded by this gene is one of the highly conserved mini-chromosome maintenance proteins (MCM) that are essential for the initiation of eukaryotic genome replication. The hexameric protein complex formed by the MCM proteins is a key component of the pre-replication complex (pre\_RC) and may be involved in the formation of replication forks and in the recruitment of other DNA replication related proteins. The MCM complex consisting of this protein and MCM2, 4 and 6 proteins possesses DNA helicase activity, and may act as a DNA unwinding enzyme. Cyclin D1-dependent kinase, CDK4, is found to associate with this protein, and may regulate the binding of this protein with the tumorsuppressor protein RB1/RB. Alternatively spliced transcript variants encoding distinct isoforms have been reported. [provided by RefSeq, Jul 2008]

## Immunogen information

### Gene ID:

4176

### Uniprot

P33993

### Synonyms:

CDC47; MCM2; P1.1-MCM3; P1CDC47; P85MCM; PNAS146;  
PPP1R104

### Immunogen:

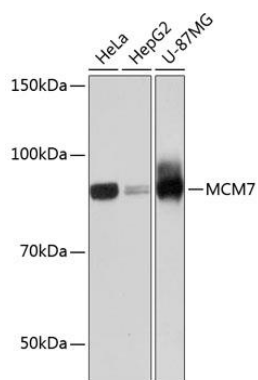
A synthesized peptide derived from human MCM7

### Storage:

Store at -20°C. Avoid freeze / thaw cycles. Buffer: PBS with 0.02% sodium azide, 0.05% BSA, 50% glycerol, pH7.3.

## Product Images

---



Western blot - MCM7 Rabbit mAb (CAB11325)