

# CDC25C Rabbit Polyclonal Antibody



CAB11328

---

## Product Information

### Size:

20uL, 50uL, 100uL, 200uL

### Observed MW:

Refer to figures

### Calculated MW:

45kDa/48kDa/50kDa/53kDa

### Applications:

IF

### Reactivity:

Human

## Protein Background

This gene encodes a conserved protein that plays a key role in the regulation of cell division. The encoded protein directs dephosphorylation of cyclin B-bound CDC2 and triggers entry into mitosis. It also suppresses p53-induced growth arrest. Multiple alternatively spliced transcript variants of this gene have been described.

## Immunogen information

### Gene ID:

995

### Uniprot

P30307

### Synonyms:

CDC25C; CDC25; PPP1R60

## Antibody Information

### Recommended dilutions:

IF 1:50 - 1:200

### Source:

Rabbit

### Isotype:

IgG

### Purification:

Affinity purification

### Immunogen:

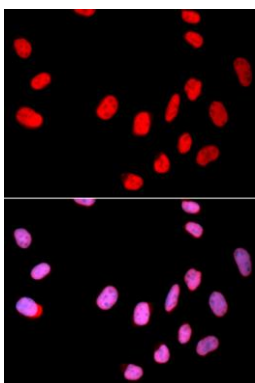
Recombinant fusion protein containing a sequence corresponding to amino acids 174-473 of human CDC25C (NP\_001781.2).

### Storage:

Store at -20°C. Avoid freeze / thaw cycles. Buffer: PBS with 0.02% sodium azide, 50% glycerol, pH7.3.

## Product Images

---



Immunofluorescence analysis of U2OS cells using CDC25C antibody (CAB11328). Blue: DAPI for nuclear staining.