

DCX Rabbit Polyclonal Antibody



CAB1134

Product Information

Size:

20uL, 50uL, 100uL, 200uL

Observed MW:

40kDa

Calculated MW:

40kDa

Applications:

WB IF

Reactivity:

Human, Mouse, Rat

Antibody Information

Recommended dilutions:

WB 1:500 - 1:2000 IF 1:50 - 1:200

Source:

Rabbit

Isotype:

IgG

Purification:

Affinity purification

Protein Background

This gene encodes a member of the doublecortin family. The protein encoded by this gene is a cytoplasmic protein and contains two doublecortin domains, which bind microtubules. In the developing cortex, cortical neurons must migrate over long distances to reach the site of their final differentiation. The encoded protein appears to direct neuronal migration by regulating the organization and stability of microtubules. In addition, the encoded protein interacts with LIS1, the regulatory gamma subunit of platelet activating factor acetylhydrolase, and this interaction is important to proper microtubule function in the developing cortex. Mutations in this gene cause abnormal migration of neurons during development and disrupt the layering of the cortex, leading to epilepsy, mental retardation, subcortical band heterotopia ('double cortex' syndrome) in females and lissencephaly ('smooth brain' syndrome) in males. Multiple transcript variants encoding different isoforms have been found for this gene.

Immunogen information

Gene ID:

1641

Uniprot

O43602

Synonyms:

DBCN; DC; LISX; SCLH; XLIS; DCX

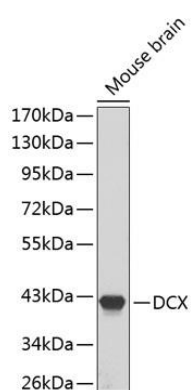
Immunogen:

Recombinant fusion protein containing a sequence corresponding to amino acids 92-441 of human DCX (NP_000546.2).

Storage:

Store at -20°C. Avoid freeze / thaw cycles. Buffer: PBS with 0.02% sodium azide, 50% glycerol, pH7.3.

Product Images



Western blot analysis of extracts of mouse brain, using DCX antibody (CAB1134). Secondary antibody: HRP Goat Anti-Rabbit IgG (H+L) (CABS014) at 1:10000 dilution. Lysates/proteins: 25ug per lane. Blocking buffer: 3% nonfat dry milk in TBST.