

[KO Validated] EGFR Rabbit Polyclonal Antibody



CAB11351

Product Information

Size:

20uL, 50uL, 100uL, 200uL

Observed MW:

175kDa

Calculated MW:

134kDa

Applications:

WB,IHC-P,IF/ICC,IP

Reactivity:

Human, Mouse, Rat

Category:

Primary antibody

Protein Background

The protein encoded by this gene is a transmembrane glycoprotein that is a member of the protein kinase superfamily. This protein is a receptor for members of the epidermal growth factor family. EGFR is a cell surface protein that binds to epidermal growth factor, thus inducing receptor dimerization and tyrosine autophosphorylation leading to cell proliferation. Mutations in this gene are associated with lung cancer. EGFR is a component of the cytokine storm which contributes to a severe form of Coronavirus Disease 2019 (COVID-19) resulting from infection with severe acute respiratory syndrome coronavirus-2 (SARS-CoV-2).

Immunogen information

Gene ID:

1956

Uniprot

P00533

Synonyms:

ERBB; ERRP; HER1; mENA; ERBB1; PIG61; NISBD2

Antibody Information

Recommended dilutions:

WB 1:1000 - 1:5000

IHC-P 1:50 - 1:200

IF/ICC 1:100 - 1:500

IP 1:50 - 1:100

Source:

Rabbit

Isotype:

IgG

Purification:

Affinity purification

Immunogen:

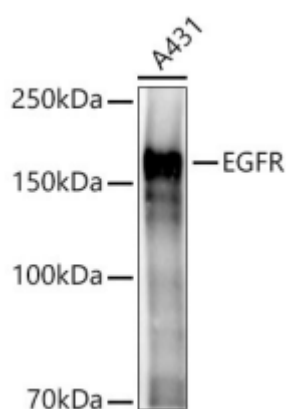
Recombinant fusion protein containing a sequence corresponding to amino acids 1021-1210 of human EGFR (NP_005219.2).

Storage:

Store at -20°C. Avoid freeze / thaw cycles.

Buffer: PBS with 0.01% thimerosal, 50% glycerol, pH7.3.

Product Images



Western blot analysis of A431, using EGFR Rabbit pAb (CAB11351) at 1:2000 dilution.

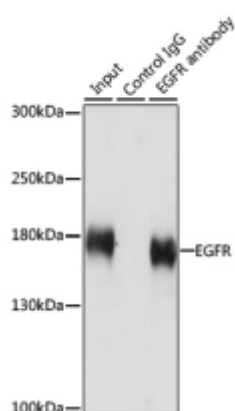
Secondary antibody: HRP Goat Anti-Rabbit IgG (H+L) (CABS014) at 1:10000 dilution.

Lysates/proteins: 25ug per lane.

Blocking buffer: 3% nonfat dry milk in TBST.

Detection: ECL Basic Kit (AbGn00020).

Exposure time: 3s.

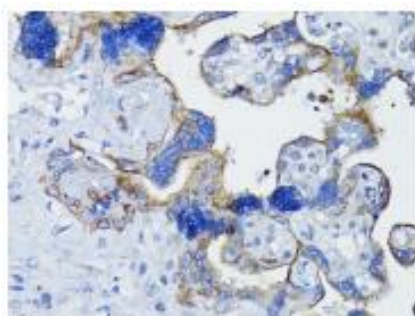


Immunoprecipitation analysis of 200 µg extracts of HeLa cells using 3 µg EGFR antibody (CAB11351).

Western blot was performed from the immunoprecipitate using EGFR antibody (CAB11351) at a dilution of 1:1000.



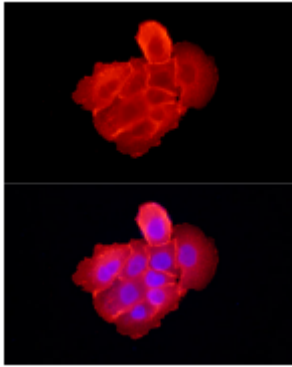
Immunohistochemistry analysis of paraffin-embedded Rat liver using EGFR antibody (CAB11351) at dilution of 1:200 (40x lens). Perform microwave antigen retrieval with 10 mM PBS buffer pH 7.2 before commencing with IHC staining protocol.



Immunohistochemistry analysis of paraffin-embedded Human placenta using EGFR antibody (CAB11351) at dilution of 1:200 (40x lens). Perform microwave antigen retrieval with 10 mM PBS buffer pH 7.2 before commencing with IHC staining protocol.



Immunohistochemistry analysis of paraffin-embedded Mouse heart using EGFR antibody (CAB11351) at dilution of 1:200 (40x lens). Perform microwave antigen retrieval with 10 mM PBS buffer pH 7.2 before commencing with IHC staining protocol.



Immunofluorescence analysis of A-431 cells using EGFR Rabbit pAb (CAB11351) at dilution of 1:300 (40x lens). Blue: DAPI for nuclear staining.