

# alpha 1 Antichymotrypsin Rabbit Monoclonal Antibody

## CAB11364



### Product Information

**Size:**

20uL, 50uL, 100uL, 200uL

**Observed MW:**

66KDa

**Calculated MW:**

50-70kDa

**Applications:**

WB IHC

**Reactivity:**

Human, Mouse

### Protein Background

The protein encoded by this gene is a plasma protease inhibitor and member of the serine protease inhibitor class. Polymorphisms in this protein appear to be tissue specific and influence protease targeting. Variations in this protein's sequence have been implicated in Alzheimer's disease, and deficiency of this protein has been associated with liver disease. Mutations have been identified in patients with Parkinson disease and chronic obstructive pulmonary disease. [provided by RefSeq, Jul 2008]

### Immunogen information

**Gene ID:**

12

**Uniprot**

P01011

**Synonyms:**

AACT; ACT; GIG24; GIG25

### Antibody Information

**Recommended dilutions:**

WB 1:500 - 1:2000 IHC 1:50 - 1:200

**Source:**

Rabbit

**Isotype:**

IgG

**Purification:**

Affinity purification

**Immunogen:**

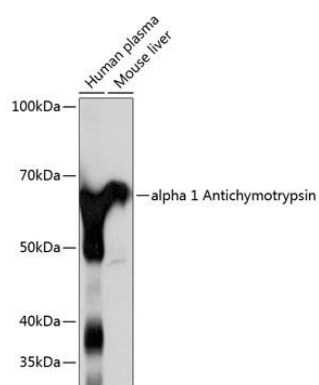
A synthesized peptide derived from human alpha 1 Antichymotrypsin

**Storage:**

Store at -20°C. Avoid freeze / thaw cycles. Buffer: PBS with 0.02% sodium azide, 0.05% BSA, 50% glycerol, pH7.3.

## Product Images

---



Western blot - alpha 1 Antichymotrypsin Rabbit mAb (CAB11364)