

BiP/GRP78 Rabbit Polyclonal Antibody



CAB11366

Product Information

Size:

20uL, 50uL, 100uL, 200uL

Observed MW:

78kDa

Calculated MW:

72kDa

Applications:

WB IHC

Reactivity:

Human, Mouse, Rat

Protein Background

The protein encoded by this gene is a member of the heat shock protein 70 (HSP70) family. It is localized in the lumen of the endoplasmic reticulum (ER), and is involved in the folding and assembly of proteins in the ER. As this protein interacts with many ER proteins, it may play a key role in monitoring protein transport through the cell.

Immunogen information

Gene ID:

3309

Uniprot

P11021

Synonyms:

HSPA5; BIP; GRP78; HEL-S-89n; MIF2

Antibody Information

Recommended dilutions:

WB 1:500 - 1:2000 IHC 1:50
- 1:200

Source:

Rabbit

Isotype:

IgG

Purification:

Affinity purification

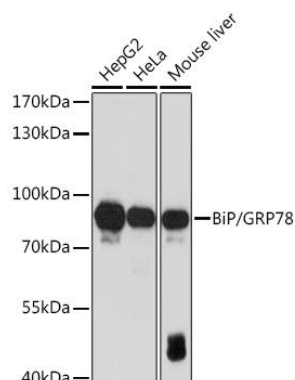
Immunogen:

A synthetic peptide corresponding to a sequence within amino acids 550-650 of human BiP/GRP78 (NP_005338.1).

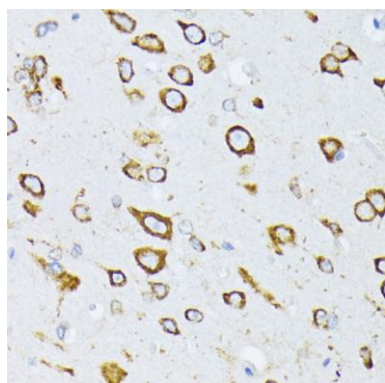
Storage:

Store at -20°C. Avoid freeze / thaw cycles. Buffer: PBS with 0.02% sodium azide, 50% glycerol, pH7.3.

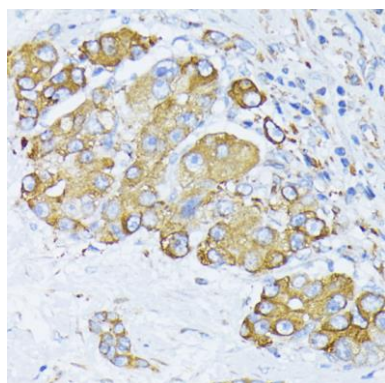
Product Images



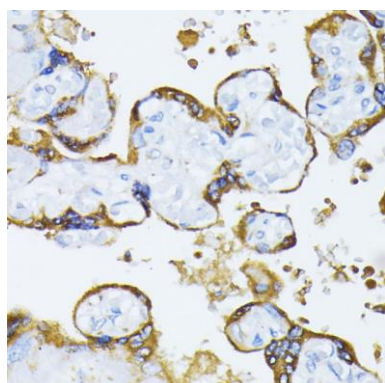
Western blot analysis of extracts of various cell lines, using HSPA5 antibody (CAB11366) at 1:1000 dilution. Secondary antibody: HRP Goat Anti-Rabbit IgG (H+L) (CABS014) at 1:10000 dilution. Lysates/proteins: 25ug per lane. Blocking buffer: 3% nonfat dry milk in TBST. Detection: ECL Basic Kit (CABM00020). Exposure time: 180s.



Immunohistochemistry of paraffin-embedded rat brain using BiP/GRP78 antibody (CAB11366) at dilution of 1:100 (40x lens).



Immunohistochemistry of paraffin-embedded human liver cancer using BiP/GRP78 antibody (CAB11366) at dilution of 1:100 (40x lens).



Immunohistochemistry of paraffin-embedded human placenta using BiP/GRP78 antibody (CAB11366) at dilution of 1:100 (40x lens).