

IRF3 Rabbit Polyclonal Antibody



CAB11373

Product Information

Size:

20uL, 50uL, 100uL, 200uL

Observed MW:

54kDa

Calculated MW:

12kDa/16kDa/33kDa/47kDa/
49kDa

Applications:

WB IHC

Reactivity:

Human, Mouse, Rat

Antibody Information

Recommended dilutions:

WB 1:500 - 1:2000 IHC 1:50
- 1:200

Source:

Rabbit

Isotype:

IgG

Purification:

Affinity purification

Protein Background

This gene encodes a member of the interferon regulatory transcription factor (IRF) family. The encoded protein is found in an inactive cytoplasmic form that upon serine/threonine phosphorylation forms a complex with CREBBP. This complex translocates to the nucleus and activates the transcription of interferons alpha and beta, as well as other interferon-induced genes. Alternatively spliced transcript variants encoding multiple isoforms have been observed for this gene.

Immunogen information

Gene ID:

3661

Uniprot

Q14653

Synonyms:

IIAE7; IRF3

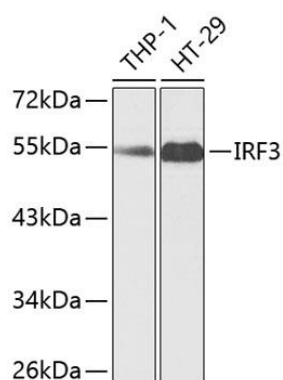
Immunogen:

Recombinant fusion protein containing a sequence corresponding to amino acids 1-260 of human IRF3 (NP_001184051.1).

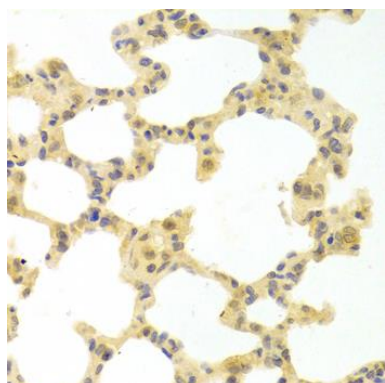
Storage:

Store at -20°C. Avoid freeze / thaw cycles. Buffer: PBS with 0.02% sodium azide, 50% glycerol, pH7.3.

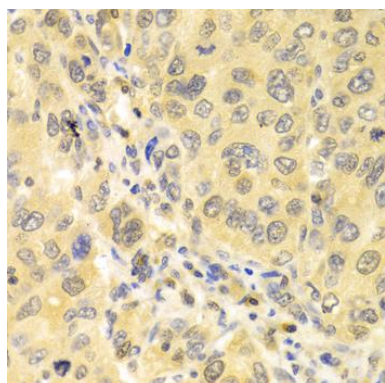
Product Images



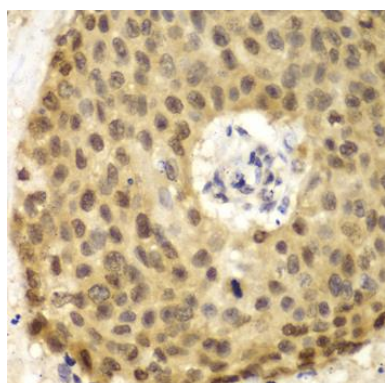
Western blot analysis of extracts of various cell lines, using IRF3 antibody (CAB11373) at 1:1000 dilution. Secondary antibody: HRP Goat Anti-Rabbit IgG (H+L) (CABS014) at 1:10000 dilution. Lysates/proteins: 25ug per lane. Blocking buffer: 3% nonfat dry milk in TBST.



Immunohistochemistry of paraffin-embedded rat lung using IRF3 antibody (CAB11373) at dilution of 1:100 (40x lens).



Immunohistochemistry of paraffin-embedded human liver cancer using IRF3 antibody (CAB11373) at dilution of 1:100 (40x lens).



Immunohistochemistry of paraffin-embedded human lung cancer using IRF3 antibody (CAB11373) at dilution of 1:100 (40x lens).