

MCM7 Rabbit Polyclonal Antibody



CAB1138

Product Information

Size:

20uL, 50uL, 100uL, 200uL

Observed MW:

91kDa

Calculated MW:

44kDa/60kDa/81kDa

Applications:

WB IF IP

Reactivity:

Human, Mouse

Antibody Information

Recommended dilutions:

WB 1:500 - 1:2000 IF 1:50 -
1:200 IP 1:50 - 1:200

Source:

Rabbit

Isotype:

IgG

Purification:

Affinity purification

Protein Background

The protein encoded by this gene is one of the highly conserved mini-chromosome maintenance proteins (MCM) that are essential for the initiation of eukaryotic genome replication. The hexameric protein complex formed by the MCM proteins is a key component of the pre-replication complex (pre_RC) and may be involved in the formation of replication forks and in the recruitment of other DNA replication related proteins. The MCM complex consisting of this protein and MCM2, 4 and 6 proteins possesses DNA helicase activity, and may act as a DNA unwinding enzyme. Cyclin D1-dependent kinase, CDK4, is found to associate with this protein, and may regulate the binding of this protein with the tumor suppressor protein RB1/RB. Alternatively spliced transcript variants encoding distinct isoforms have been reported.

Immunogen information

Gene ID:

4176

Uniprot

P33993

Synonyms:

MCM7; CDC47; MCM2; P1.1-MCM3; P1CDC47; P85MCM;
PNAS146; PPP1R104

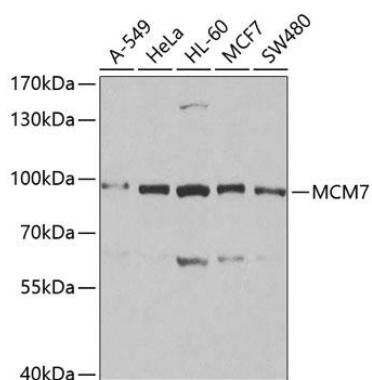
Immunogen:

Recombinant fusion protein containing a sequence corresponding to amino acids 360-719 of human MCM7 (NP_005907.3).

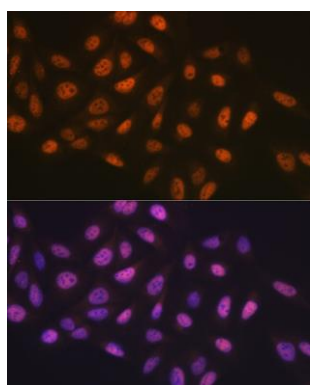
Storage:

Store at -20°C. Avoid freeze / thaw cycles. Buffer: PBS with 0.02% sodium azide, 50% glycerol, pH7.3.

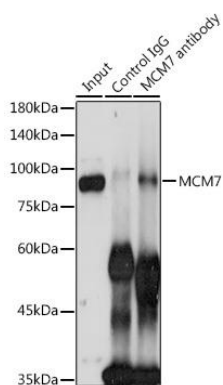
Product Images



Western blot analysis of extracts of various cell lines, using MCM7 antibody (CAB1138) at 1:1000 dilution. Secondary antibody: HRP Goat Anti-Rabbit IgG (H+L) (CABS014) at 1:10000 dilution. Lysates/proteins: 25ug per lane. Blocking buffer: 3% nonfat dry milk in TBST. Detection: ECL Basic Kit (CABM00020). Exposure time: 10s.



Immunofluorescence analysis of U-2 OS cells using MCM7 Rabbit pAb (CAB1138) at dilution of 1:100 (40x lens). Blue: DAPI for nuclear staining.



Immunoprecipitation analysis of 300ug extracts of HeLa cells using 3ug MCM7 antibody (CAB1138). Western blot was performed from the immunoprecipitate using MCM7 antibody (CAB1138) at a dilution of 1:500.