

RAC2 Rabbit Polyclonal Antibody



CAB1139

Product Information

Size:

20uL, 50uL, 100uL, 200uL

Observed MW:

21KDa

Calculated MW:

21kDa

Applications:

WB IHC IF

Reactivity:

Human, Mouse, Rat

Protein Background

This gene encodes a member of the Ras superfamily of small guanosine triphosphate (GTP)-metabolizing proteins. The encoded protein localizes to the plasma membrane, where it regulates diverse processes, such as secretion, phagocytosis, and cell polarization. Activity of this protein is also involved in the generation of reactive oxygen species. Mutations in this gene are associated with neutrophil immunodeficiency syndrome. There is a pseudogene for this gene on chromosome 6.

Immunogen information

Gene ID:

5880

Uniprot

P15153

Synonyms:

RAC2; EN-7; Gx; HSPC022; p21-Rac2

Antibody Information

Recommended dilutions:

WB 1:500 - 1:2000 IHC 1:50
- 1:100 IF 1:50 - 1:100

Source:

Rabbit

Isotype:

IgG

Purification:

Affinity purification

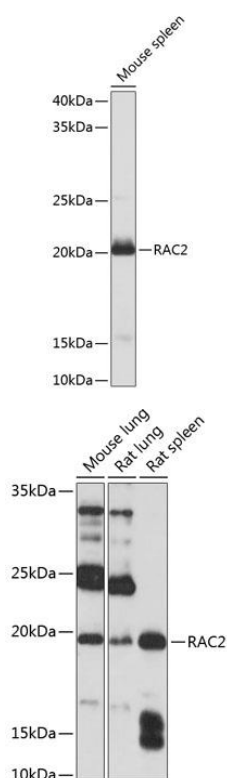
Immunogen:

Recombinant fusion protein containing a sequence corresponding to amino acids 1-192 of human RAC2 (NP_002863.1).

Storage:

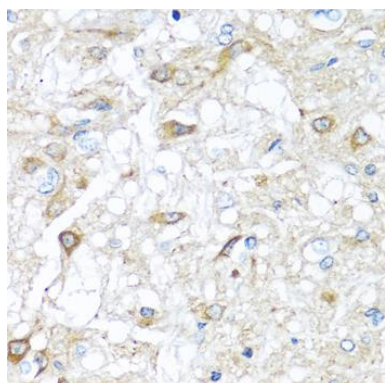
Store at -20°C. Avoid freeze / thaw cycles. Buffer: PBS with 0.02% sodium azide, 50% glycerol, pH7.3.

Product Images

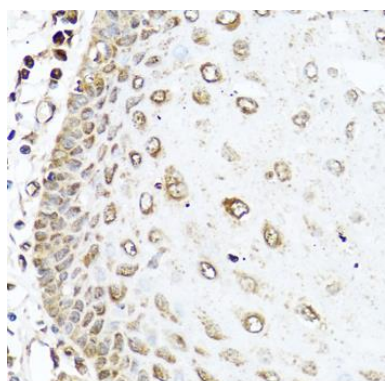


Western blot analysis of extracts of Mouse spleen, using RAC2 Polyclonal Antibody (CAB1139) at 1:1000 dilution. Secondary antibody: HRP Goat Anti-Rabbit IgG (H+L) (CABS014) at 1:10000 dilution. Lysates/proteins: 25ug per lane. Blocking buffer: 3% nonfat dry milk in TBST. Detection: ECL Basic Kit (CABM00020). Exposure time: 3s.

Western blot analysis of extracts of various cell lines, using RAC2 Polyclonal Antibody (CAB1139) at 1:1000 dilution. Secondary antibody: HRP Goat Anti-Rabbit IgG (H+L) (CABS014) at 1:10000 dilution. Lysates/proteins: 25ug per lane. Blocking buffer: 3% nonfat dry milk in TBST. Detection: ECL Basic Kit (CABM00020). Exposure time: 3min.



Immunohistochemistry of paraffin-embedded rat brain using RAC2 antibody (CAB1139) at dilution of 1:100 (40x lens).



Immunohistochemistry of paraffin-embedded human esophagus using RAC2 antibody (CAB1139) at dilution of 1:100 (40x lens).