

# Ki67 Rabbit Polyclonal Antibody



CAB11390

---

## Product Information

### Size:

20uL, 50uL, 100uL, 200uL

### Observed MW:

359kDa

### Calculated MW:

319kDa/358kDa

### Applications:

WB IF

### Reactivity:

Human, Mouse, Rat

## Protein Background

This gene encodes a nuclear protein that is associated with and may be necessary for cellular proliferation. Alternatively spliced transcript variants have been described. A related pseudogene exists on chromosome X.

## Immunogen information

### Gene ID:

4288

### Uniprot

P46013

### Synonyms:

MKI67; KIA; MIB-; MIB-1; PPP1R105; marker of proliferation Ki-67; Ki67

## Antibody Information

### Recommended dilutions:

WB 1:500 - 1:2000 IF 1:50 - 1:200

### Source:

Rabbit

### Isotype:

IgG

### Purification:

Affinity purification

### Immunogen:

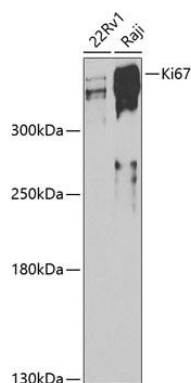
A synthetic peptide corresponding to a sequence within amino acids 700-800 of human Ki67 (NP\_001139438.1).

### Storage:

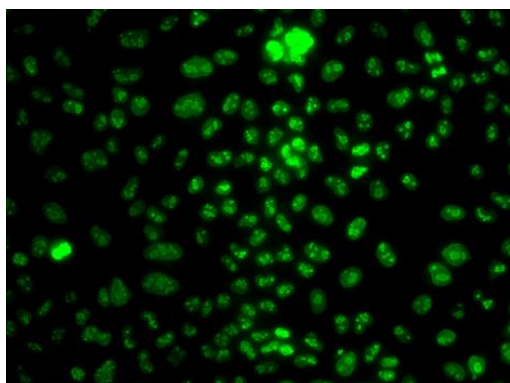
Store at -20°C. Avoid freeze / thaw cycles. Buffer: PBS with 0.02% sodium azide, 50% glycerol, pH7.3.

## Product Images

---



Western blot analysis of extracts of various cell lines, using Ki67 antibody (CAB11390) at 1:500 dilution. Secondary antibody: HRP Goat Anti-Rabbit IgG (H+L) (CABS014) at 1:10000 dilution. Lysates/proteins: 25ug per lane. Blocking buffer: 3% nonfat dry milk in TBST. Detection: ECL Basic Kit (CABM00020). Exposure time: 90s.



Immunofluorescence analysis of HeLa cells using Ki67 antibody (CAB11390).