

# MMP9 Rabbit Polyclonal Antibody



CAB11391

---

## Product Information

**Size:**

20uL, 50uL, 100uL, 200uL

**Observed MW:**

67kDa

**Calculated MW:**

78kDa

**Applications:**

IHC

**Reactivity:**

Human, Mouse

## Antibody Information

**Recommended dilutions:**

IHC 1:100 - 1:200

**Source:**

Rabbit

**Isotype:**

IgG

**Purification:**

Affinity purification

## Protein Background

Proteins of the matrix metalloproteinase (MMP) family are involved in the breakdown of extracellular matrix in normal physiological processes, such as embryonic development, reproduction, and tissue remodeling, as well as in disease processes, such as arthritis and metastasis. Most MMP's are secreted as inactive proproteins which are activated when cleaved by extracellular proteinases. The enzyme encoded by this gene degrades type IV and V collagens. Studies in rhesus monkeys suggest that the enzyme is involved in IL-8-induced mobilization of hematopoietic progenitor cells from bone marrow, and murine studies suggest a role in tumor-associated tissue remodeling.

## Immunogen information

**Gene ID:**

4318

**Uniprot**

P14780

**Synonyms:**

MMP9; CLG4B; GELB; MANDP2; MMP-9

**Immunogen:**

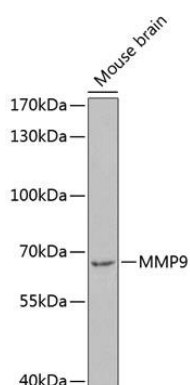
A synthetic peptide corresponding to a sequence within amino acids 400-500 of human MMP9 (NP\_004985.2).

**Storage:**

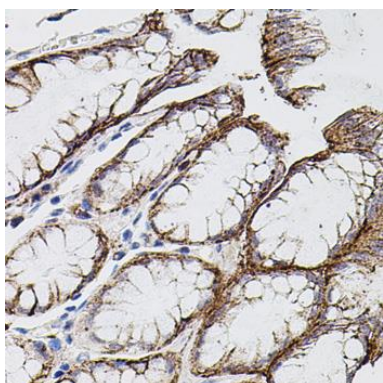
Store at -20°C. Avoid freeze / thaw cycles. Buffer: PBS with 0.02% sodium azide, 50% glycerol, pH7.3.

## Product Images

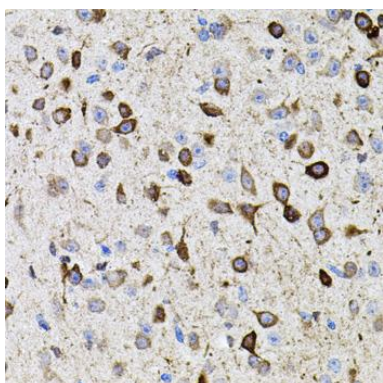
---



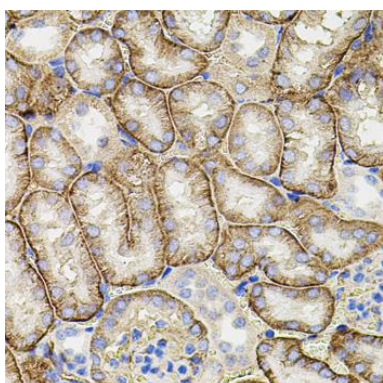
Western blot analysis of extracts of mouse brain, using MMP9 antibody (CAB11391) at 1:1000 dilution. Secondary antibody: HRP Goat Anti-Rabbit IgG (H+L) (CABS014) at 1:10000 dilution. Lysates/proteins: 25ug per lane. Blocking buffer: 3% nonfat dry milk in TBST. Detection: ECL Enhanced Kit (CABM00021). Exposure time: 90s.



Immunohistochemistry of paraffin-embedded human stomach using MMP9 antibody (CAB11391) at dilution of 1:100 (40x lens).



Immunohistochemistry of paraffin-embedded mouse brain using MMP9 antibody (CAB11391) at dilution of 1:100 (40x lens).



Immunohistochemistry of paraffin-embedded mouse kidney using MMP9 antibody (CAB11391) at dilution of 1:100 (40x lens).