

[KO Validated] RALBP1 Rabbit Polyclonal Antibody

CAB1140



Product Information

Size:

20uL, 50uL, 100uL, 200uL

Observed MW:

100kDa

Calculated MW:

76kDa

Applications:

WB IHC

Reactivity:

Human, Mouse, Rat

Antibody Information

Recommended dilutions:

WB 1:500 - 1:2000 IHC 1:50 - 1:200

Source:

Rabbit

Isotype:

IgG

Purification:

Affinity purification

Protein Background

Immunogen information

Gene ID:

10928

Uniprot

Q15311

Synonyms:

RALBP1; RIP1; RLIP1; RLIP76

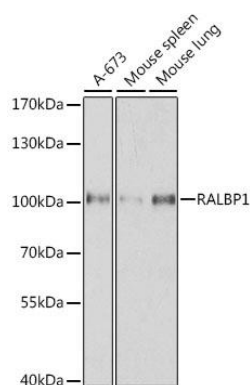
Immunogen:

Recombinant fusion protein containing a sequence corresponding to amino acids 396-655 of human RALBP1 (NP_006779.1).

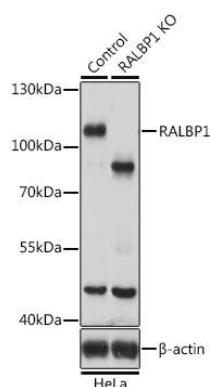
Storage:

Store at -20°C. Avoid freeze / thaw cycles. Buffer: PBS with 0.02% sodium azide, 50% glycerol, pH7.3.

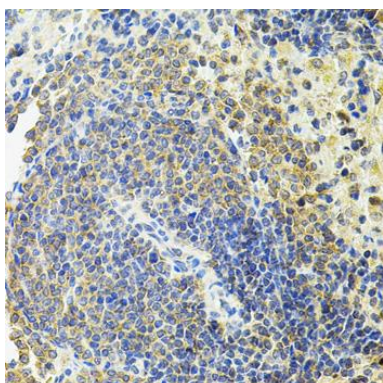
Product Images



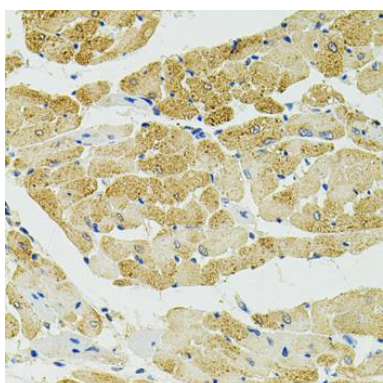
Western blot analysis of extracts of various cell lines, using RALBP1 antibody (CAB1140) at 1:500 dilution. Secondary antibody: HRP Goat Anti-Rabbit IgG (H+L) (CABS014) at 1:10000 dilution. Lysates/proteins: 25ug per lane. Blocking buffer: 3% nonfat dry milk in TBST.



Western blot analysis of extracts from normal (control) and RALBP1 knockout (KO) HeLa cells, using RALBP1 antibody (CAB1140) at 1:500 dilution. Secondary antibody: HRP Goat Anti-Rabbit IgG (H+L) (CABS014) at 1:10000 dilution. Lysates/proteins: 25ug per lane. Blocking buffer: 3% nonfat dry milk in TBST. Detection: ECL Basic Kit (CABM00020). Exposure time: 5s.



Immunohistochemistry of paraffin-embedded rat spleen using RALBP1 antibody (CAB1140) at dilution of 1:100 (40x lens).



Immunohistochemistry of paraffin-embedded rat heart using RALBP1 antibody (CAB1140) at dilution of 1:100 (40x lens).