

Vimentin Rabbit Polyclonal Antibody



CAB11423

Product Information

Size:

20uL, 50uL, 100uL, 200uL

Observed MW:

53kDa

Calculated MW:

53kDa

Applications:

WB IHC IF

Reactivity:

Human, Mouse, Rat

Antibody Information

Recommended dilutions:

WB 1:500 - 1:1000 IHC 1:50
- 1:100 IF 1:50 - 1:100

Source:

Rabbit

Isotype:

IgG

Purification:

Affinity purification

Protein Background

This gene encodes a member of the intermediate filament family. Intermediate filaments, along with microtubules and actin microfilaments, make up the cytoskeleton. The protein encoded by this gene is responsible for maintaining cell shape, integrity of the cytoplasm, and stabilizing cytoskeletal interactions. It is also involved in the immune response, and controls the transport of low-density lipoprotein (LDL)-derived cholesterol from a lysosome to the site of esterification. It functions as an organizer of a number of critical proteins involved in attachment, migration, and cell signaling. Mutations in this gene causes a dominant, pulverulent cataract.

Immunogen information

Gene ID:

7431

Uniprot

P08670

Synonyms:

CTRCT30; HEL113; Vimentin; VIM; vimentin

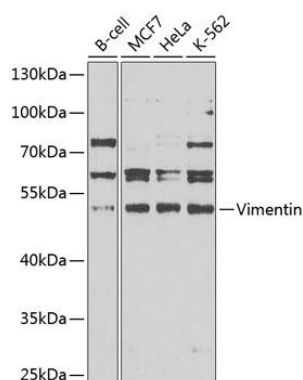
Immunogen:

Recombinant fusion protein containing a sequence corresponding to amino acids 1-101 of human Vimentin (NP_003371.2).

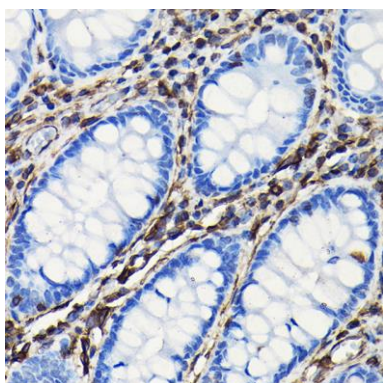
Storage:

Store at -20°C. Avoid freeze / thaw cycles. Buffer: PBS with 0.02% sodium azide, 50% glycerol, pH7.3.

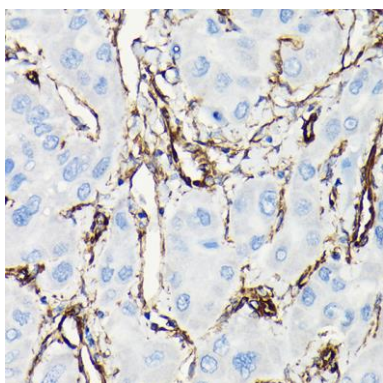
Product Images



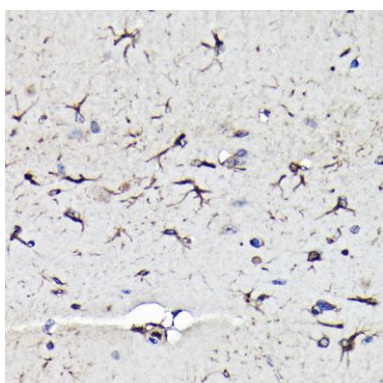
Western blot analysis of extracts of various cell lines, using Vimentin antibody (CAB11423) at 1:1000 dilution. Secondary antibody: HRP Goat Anti-Rabbit IgG (H+L) (CABS014) at 1:10000 dilution. Lysates/proteins: 25ug per lane. Blocking buffer: 3% nonfat dry milk in TBST. Detection: ECL Enhanced Kit (CABM00021). Exposure time: 90s.



Immunohistochemistry of paraffin-embedded human colon using Vimentin Rabbit pAb (CAB11423) at dilution of 1:100 (40x lens).



Immunohistochemistry of paraffin-embedded human liver cancer using Vimentin Rabbit pAb (CAB11423) at dilution of 1:100 (40x lens).



Immunohistochemistry of paraffin-embedded mouse brain using Vimentin Rabbit pAb (CAB11423) at dilution of 1:100 (40x lens).