

ASC / TMS1 Rabbit Polyclonal Antibody



CAB11433

Product Information

Size:

20uL, 50uL, 100uL, 200uL

Observed MW:

21kDa

Calculated MW:

15kDa/19kDa/21kDa

Applications:

WB IHC IF

Reactivity:

Human, Mouse, Rat

Antibody Information

Recommended dilutions:

WB 1:500 - 1:2000 IHC 1:50
- 1:200 IF 1:50 - 1:200

Source:

Rabbit

Isotype:

IgG

Purification:

Affinity purification

Protein Background

This gene encodes an adaptor protein that is composed of two protein-protein interaction domains: a N-terminal PYRIN-PAAD-DAPIN domain (PYD) and a C-terminal caspase-recruitment domain (CARD). The PYD and CARD domains are members of the six-helix bundle death domain-fold superfamily that mediates assembly of large signaling complexes in the inflammatory and apoptotic signaling pathways via the activation of caspase. In normal cells, this protein is localized to the cytoplasm; however, in cells undergoing apoptosis, it forms ball-like aggregates near the nuclear periphery. Two transcript variants encoding different isoforms have been found for this gene.

Immunogen information

Gene ID:

29108

Uniprot

Q9ULZ3

Synonyms:

PYCARD; ASC; CARD5; TMS; TMS-1; TMS1; PYD and CARD domain containing; ASC / TMS1

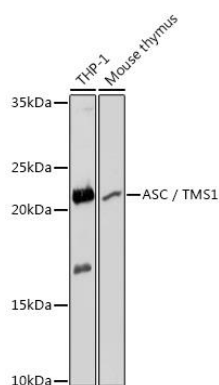
Immunogen:

Recombinant fusion protein containing a sequence corresponding to amino acids 50-195 of human ASC / TMS1 (NP_037390.2).

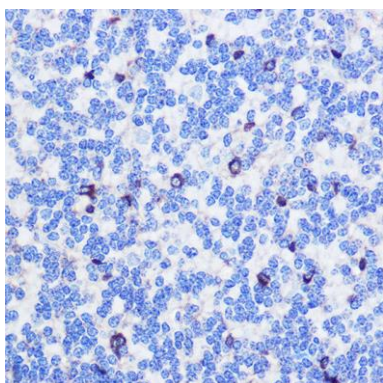
Storage:

Store at -20°C. Avoid freeze / thaw cycles. Buffer: PBS with 0.02% sodium azide, 50% glycerol, pH7.3.

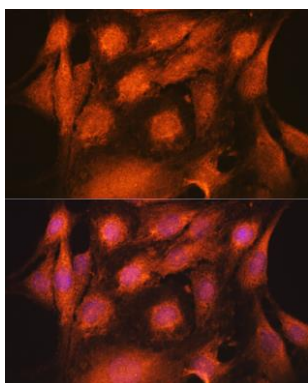
Product Images



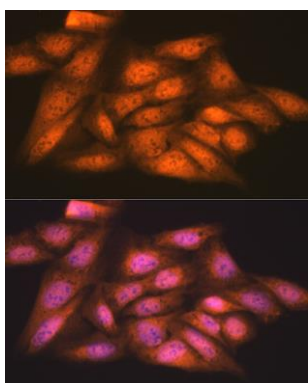
Western blot analysis of extracts of various cell lines, using ASC / TMS1 antibody (CAB11433) at 1:1000 dilution. Secondary antibody: HRP Goat Anti-Rabbit IgG (H+L) (CABS014) at 1:10000 dilution. Lysates/proteins: 25ug per lane. Blocking buffer: 3% nonfat dry milk in TBST. Detection: ECL Basic Kit (CABM00020). Exposure time: 1s.



Immunohistochemistry of paraffin-embedded rat brain using ASC / TMS1 Rabbit pAb (CAB11433) at dilution of 1:100 (40x lens).



Immunofluorescence analysis of C6 cells using ASC / TMS1 Rabbit pAb (CAB11433) at dilution of 1:100 (40x lens). Blue: DAPI for nuclear staining.



Immunofluorescence analysis of U-2 OS cells using ASC / TMS1 Rabbit pAb (CAB11433) at dilution of 1:100 (40x lens). Blue: DAPI for nuclear staining.