

GCLM Rabbit Monoclonal Antibody



CAB11444

Product Information

Size:

20uL, 50uL, 100uL, 200uL

Observed MW:

30kd

Calculated MW:

31kDa

Applications:

WB

Reactivity:

Human

Protein Background

Glutamate-cysteine ligase, also known as gamma-glutamylcysteine synthetase, is the first rate limiting enzyme of glutathione synthesis. The enzyme consists of two subunits, a heavy catalytic subunit and a light regulatory subunit. Gamma glutamylcysteine synthetase deficiency has been implicated in some forms of hemolytic anemia. Alternative splicing results in multiple transcript variants encoding different isoforms. [provided by RefSeq, Apr 2015]

Immunogen information

Gene ID:

2730

Uniprot

P48507

Synonyms:

GLCLR

Antibody Information

Recommended dilutions:

WB 1:500 - 1:2000

Source:

Rabbit

Isotype:

IgG

Purification:

Affinity purification

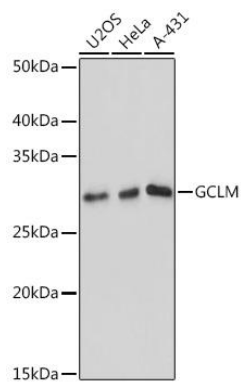
Immunogen:

A synthesized peptide derived from human GCLM

Storage:

Store at -20°C. Avoid freeze / thaw cycles. Buffer: PBS with 0.02% sodium azide, 0.05% BSA, 50% glycerol, pH7.3.

Product Images



Western blot - GCLM Rabbit mAb (CAB11444)