

# MLKL Rabbit Polyclonal Antibody



CAB11458

## Product Information

### Size:

20uL, 50uL, 100uL, 200uL

### Observed MW:

Refer to figures

### Calculated MW:

30kDa/54kDa

### Applications:

IHC IF

### Reactivity:

Human

## Antibody Information

### Recommended dilutions:

IHC 1:50 - 1:200 IF 1:50 - 1:200

### Source:

Rabbit

### Isotype:

IgG

### Purification:

Affinity purification

## Protein Background

This gene belongs to the protein kinase superfamily. The encoded protein contains a protein kinase-like domain; however, is thought to be inactive because it lacks several residues required for activity. This protein plays a critical role in tumor necrosis factor (TNF)-induced necroptosis, a programmed cell death process, via interaction with receptor-interacting protein 3 (RIP3), which is a key signaling molecule in necroptosis pathway. Inhibitor studies and knockdown of this gene inhibited TNF-induced necrosis. High levels of this protein and RIP3 are associated with inflammatory bowel disease in children. Alternatively spliced transcript variants have been described for this gene.

## Immunogen information

### Gene ID:

197259

### Uniprot

Q8NB16

### Synonyms:

hMLKL; MLKL

### Immunogen:

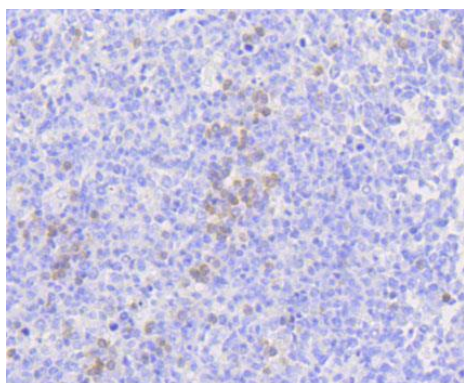
Recombinant protein of human MLKL

### Storage:

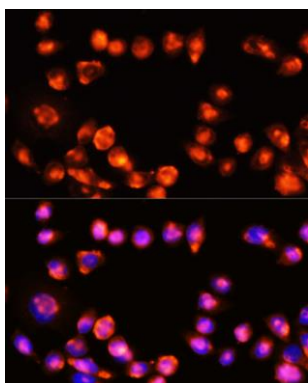
Store at -20°C. Avoid freeze / thaw cycles. Buffer: PBS with 0.02% sodium azide, 50% glycerol, pH7.3.

## Product Images

---



Immunohistochemistry of paraffin-embedded human tonsil using MLKL antibody (CAB11458) at dilution of 1:100 (40x lens).



Immunofluorescence analysis of HeLa cells using MLKL Monoclonal Antibody (CAB11458) at dilution of 1:100 (40x lens). Blue: DAPI for nuclear staining.