

Mad2L1 Rabbit Monoclonal Antibody



CAB11469

Product Information

Size:

20uL, 50uL, 100uL, 200uL

Observed MW:

24KDa

Calculated MW:

24kDa

Applications:

WB IHC

Reactivity:

Human, Mouse, Rat

Protein Background

MAD2L1 is a component of the mitotic spindle assembly checkpoint that prevents the onset of anaphase until all chromosomes are properly aligned at the metaphase plate. MAD2L1 is related to the MAD2L2 gene located on chromosome 1. A MAD2 pseudogene has been mapped to chromosome 14. [provided by RefSeq, Jul 2008]

Immunogen information

Gene ID:

4085

Uniprot

Q13257

Synonyms:

HSMAD2; MAD2

Antibody Information

Recommended dilutions:

WB 1:500 - 1:2000 IHC 1:50
- 1:200

Source:

Rabbit

Isotype:

IgG

Purification:

Affinity purification

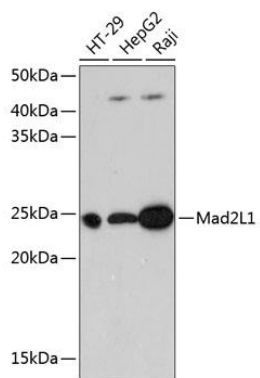
Immunogen:

A synthesized peptide derived from human Mad2L1

Storage:

Store at -20°C. Avoid freeze / thaw cycles. Buffer: PBS with 0.02% sodium azide, 0.05% BSA, 50% glycerol, pH7.3.

Product Images



Western blot - Mad2L1 Rabbit mAb (CAB11469)