

Glycophorin C Rabbit Monoclonal Antibody



CAB11472

Product Information

Size:

20uL, 50uL, 100uL, 200uL

Observed MW:

30-40KDa

Calculated MW:

39kDa

Applications:

WB IHC

Reactivity:

Human, Mouse, Rat

Antibody Information

Recommended dilutions:

WB 1:500 - 1:2000 IHC 1:50
- 1:200

Source:

Rabbit

Isotype:

IgG

Purification:

Affinity purification

Protein Background

Glycophorin C (GYPC) is an integral membrane glycoprotein. It is a minor species carried by human erythrocytes, but plays an important role in regulating the mechanical stability of red cells. A number of glycophorin C mutations have been described. The Gerbich and Yus phenotypes are due to deletion of exon 3 and 2, respectively. The Webb and Duch antigens, also known as glycophorin D, result from single point mutations of the glycophorin C gene. The glycophorin C protein has very little homology with glycophorins A and B. Alternate splicing results in multiple transcript variants. [provided by RefSeq, Feb 2012]

Immunogen information

Gene ID:

2995

Uniprot

P04921

Synonyms:

CD236; CD236R; GE; GE:GPC:GPD:GYPD; GPC; GPD; GYPD; PAS-2;
PAS-2'

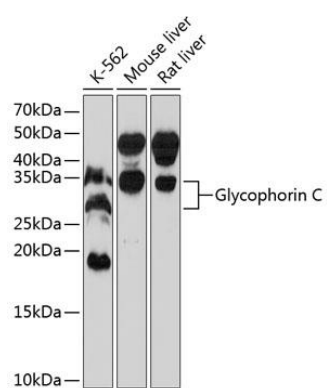
Immunogen:

A synthesized peptide derived from human Glycophorin C

Storage:

Store at -20°C. Avoid freeze / thaw cycles. Buffer: PBS with 0.02% sodium azide, 0.05% BSA, 50% glycerol, pH7.3.

Product Images



Western blot - Glycophorin C Rabbit mAb (CAB11472)