

NCF1 Rabbit Polyclonal Antibody



CAB1148

Product Information

Size:

20uL, 50uL, 100uL, 200uL

Observed MW:

45kDa

Calculated MW:

30kDa/44kDa

Applications:

WB IF IP

Reactivity:

Human, Mouse, Rat

Protein Background

The protein encoded by this gene is a 47 kDa cytosolic subunit of neutrophil NADPH oxidase. This oxidase is a multicomponent enzyme that is activated to produce superoxide anion. Mutations in this gene have been associated with chronic granulomatous disease.

Immunogen information

Gene ID:

653361

Uniprot

P14598

Synonyms:

NCF1; NCF1A; NOXO2; SH3PXD1A; p47phox

Antibody Information

Recommended dilutions:

WB 1:500 - 1:2000 IF 1:50 -
1:100 IP 1:50 - 1:100

Source:

Rabbit

Isotype:

IgG

Purification:

Affinity purification

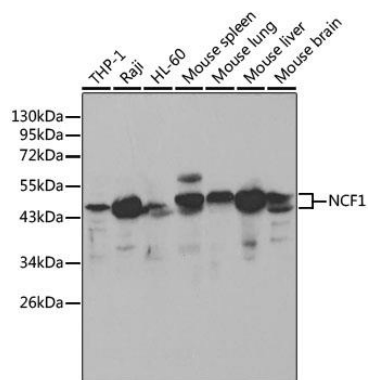
Immunogen:

Recombinant fusion protein containing a sequence corresponding to amino acids 1-390 of human NCF1 (NP_000256.4).

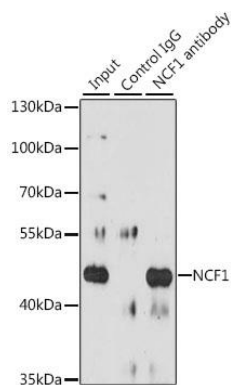
Storage:

Store at -20°C. Avoid freeze / thaw cycles. Buffer: PBS with 0.02% sodium azide, 50% glycerol, pH7.3.

Product Images



Western blot analysis of extracts of various cell lines, using NCF1 antibody (CAB1148) at 1:1000 dilution. Secondary antibody: HRP Goat Anti-Rabbit IgG (H+L) (CABS014) at 1:10000 dilution. Lysates/proteins: 25ug per lane. Blocking buffer: 3% nonfat dry milk in TBST.



Immunoprecipitation analysis of 200ug extracts of Raji cells, using 3 ug NCF1 antibody (CAB1148). Western blot was performed from the immunoprecipitate using NCF1 antibody (CAB1148) at a dilution of 1:1000.