

# IRF5 Rabbit Polyclonal Antibody



CAB1149

## Product Information

### Size:

20uL, 50uL, 100uL, 200uL

### Observed MW:

56kDa/60kDa

### Calculated MW:

17kDa/47kDa/54kDa/56kDa/  
57kDa

### Applications:

WB IHC IF

### Reactivity:

Human, Rat

## Protein Background

This gene encodes a member of the interferon regulatory factor (IRF) family, a group of transcription factors with diverse roles, including virus-mediated activation of interferon, and modulation of cell growth, differentiation, apoptosis, and immune system activity. Members of the IRF family are characterized by a conserved N-terminal DNA-binding domain containing tryptophan (W) repeats. Alternative promoter use and alternative splicing result in multiple transcript variants, and a 30-nt indel polymorphism (SNP rs60344245) can result in loss of a 10-aa segment.

## Immunogen information

### Gene ID:

3663

### Uniprot

Q13568

### Synonyms:

IRF5; SLEB10

## Antibody Information

### Recommended dilutions:

WB 1:500 - 1:2000 IHC 1:50  
- 1:100 IF 1:50 - 1:100

### Source:

Rabbit

### Isotype:

IgG

### Purification:

Affinity purification

### Immunogen:

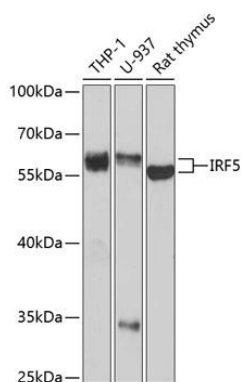
Recombinant fusion protein containing a sequence corresponding to amino acids 1-200 of human IRF5 (NP\_001092097.2).

### Storage:

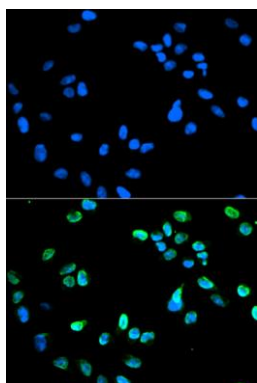
Store at -20°C. Avoid freeze / thaw cycles. Buffer: PBS with 0.02% sodium azide, 50% glycerol, pH7.3.

## Product Images

---



Western blot analysis of extracts of various cell lines, using IRF5 antibody (CAB1149) at 1:1000 dilution. Secondary antibody: HRP Goat Anti-Rabbit IgG (H+L) (CABS014) at 1:10000 dilution. Lysates/proteins: 25ug per lane. Blocking buffer: 3% nonfat dry milk in TBST. Detection: ECL Enhanced Kit (CABM00021). Exposure time: 90s.



Immunofluorescence analysis of HeLa cells using IRF5 antibody (CAB1149). Blue: DAPI for nuclear staining.