

CD41 Rabbit Monoclonal Antibody



CAB11490

Product Information

Size:

20uL, 50uL, 100uL, 200uL

Observed MW:

137KDa

Calculated MW:

135kDa

Applications:

WB IHC

Reactivity:

Human, Mouse, Rat

Antibody Information

Recommended dilutions:

WB 1:500 - 1:2000 IHC 1:50
- 1:200

Source:

Rabbit

Isotype:

IgG

Purification:

Affinity purification

Protein Background

This gene encodes a member of the integrin alpha chain family of proteins. The encoded preproprotein is proteolytically processed to generate light and heavy chains that associate through disulfide linkages to form a subunit of the alpha-IIb/beta-3 integrin cell adhesion receptor. This receptor plays a crucial role in the blood coagulation system, by mediating platelet aggregation. Mutations in this gene are associated with platelet-type bleeding disorders, which are characterized by a failure of platelet aggregation, including Glanzmann thrombasthenia. [provided by RefSeq, Jan 2016]

Immunogen information

Gene ID:

3674

Uniprot

P08514

Synonyms:

BDPLT16; BDPLT2; CD41; CD41B; GP2B; GPIIb; GT; GTA; HPA3;
PPP1R93

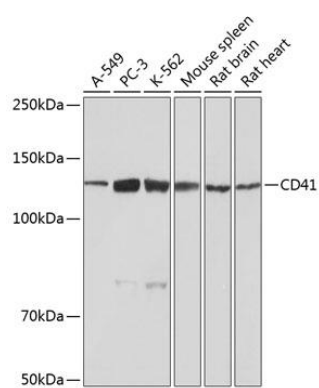
Immunogen:

A synthesized peptide derived from human CD41

Storage:

Store at -20°C. Avoid freeze / thaw cycles. Buffer: PBS with 0.02% sodium azide, 0.05% BSA, 50% glycerol, pH7.3.

Product Images



Western blot - CD41 Rabbit mAb (CAB11490)