

E-Cadherin Rabbit Polyclonal Antibody



CAB11492

Product Information

Size:

20uL, 50uL, 100uL, 200uL

Observed MW:

120kDa

Calculated MW:

90kDa/97kDa

Applications:

WB IHC

Reactivity:

Human, Mouse, Rat

Antibody Information

Recommended dilutions:

WB 1:500 - 1:1000 IHC 1:50
- 1:200

Source:

Rabbit

Isotype:

IgG

Purification:

Affinity purification

Protein Background

This gene encodes a classical cadherin of the cadherin superfamily. Alternative splicing results in multiple transcript variants, at least one of which encodes a preproprotein that is proteolytically processed to generate the mature glycoprotein. This calcium-dependent cell-cell adhesion protein is comprised of five extracellular cadherin repeats, a transmembrane region and a highly conserved cytoplasmic tail. Mutations in this gene are correlated with gastric, breast, colorectal, thyroid and ovarian cancer. Loss of function of this gene is thought to contribute to cancer progression by increasing proliferation, invasion, and/or metastasis. The ectodomain of this protein mediates bacterial adhesion to mammalian cells and the cytoplasmic domain is required for internalization. This gene is present in a gene cluster with other members of the cadherin family on chromosome 16.

Immunogen information

Gene ID:

999

Uniprot

P12830

Synonyms:

Arc-1; CD324; CDHE; ECAD; LCAM; UVO; CDH1; E-Cadherin

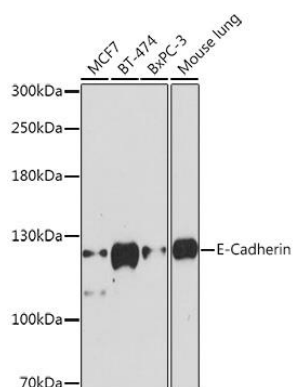
Immunogen:

A synthetic peptide corresponding to a sequence within amino acids 700-800 of human E-Cadherin (NP_004351.1).

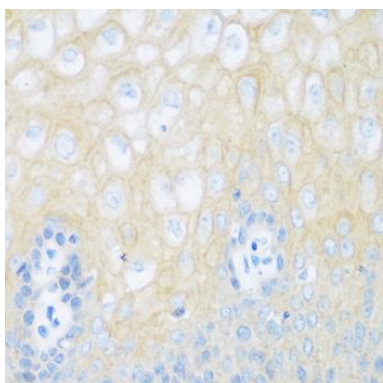
Storage:

Store at -20°C. Avoid freeze / thaw cycles. Buffer: PBS with 0.02% sodium azide, 50% glycerol, pH7.3.

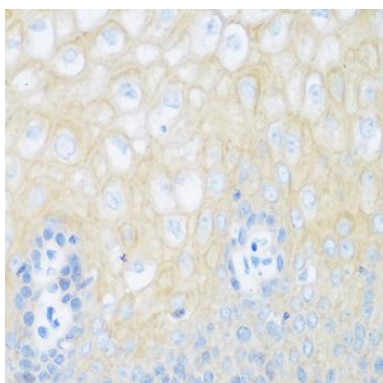
Product Images



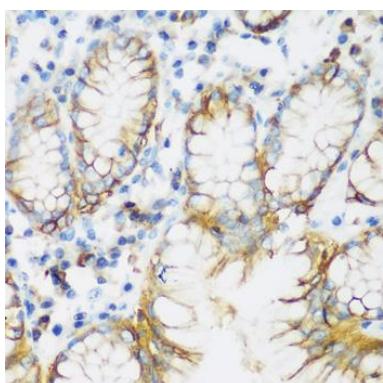
Western blot analysis of extracts of various cell lines, using E-Cadherin antibody (CAB11492) at 1:1000 dilution. Secondary antibody: HRP Goat Anti-Rabbit IgG (H+L) (CABS014) at 1:10000 dilution. Lysates/proteins: 25ug per lane. Blocking buffer: 3% nonfat dry milk in TBST. Detection: ECL Enhanced Kit (CABM00021). Exposure time: 180s.



Immunohistochemistry of paraffin-embedded human esophagus using E-Cadherin antibody (CAB11492) at dilution of 1:100 (40x lens).



Immunohistochemistry of paraffin-embedded human esophagus using E-Cadherin antibody (CAB11492) at dilution of 1:200 (40x lens).



Immunohistochemistry of paraffin-embedded human stomach using E-Cadherin antibody (CAB11492) at dilution of 1:200 (40x lens).