

# SOX2 Rabbit Polyclonal Antibody



CAB11501

## Product Information

### Size:

20uL, 50uL, 100uL, 200uL

### Observed MW:

38kDa

### Calculated MW:

34kDa

### Applications:

WB IF

### Reactivity:

Human, Mouse, Rat

## Protein Background

This intronless gene encodes a member of the SRY-related HMG-box (SOX) family of transcription factors involved in the regulation of embryonic development and in the determination of cell fate. The product of this gene is required for stem-cell maintenance in the central nervous system, and also regulates gene expression in the stomach. Mutations in this gene have been associated with optic nerve hypoplasia and with syndromic microphthalmia, a severe form of structural eye malformation. This gene lies within an intron of another gene called SOX2 overlapping transcript (SOX2OT).

## Immunogen information

### Gene ID:

6657

### Uniprot

P48431

### Synonyms:

ANOP3; MCOPS3; SOX2; SRY-box 2

## Antibody Information

### Recommended dilutions:

WB 1:500 - 1:2000 IF 1:50 - 1:200

### Source:

Rabbit

### Isotype:

IgG

### Purification:

Affinity purification

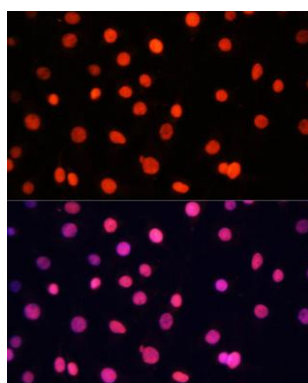
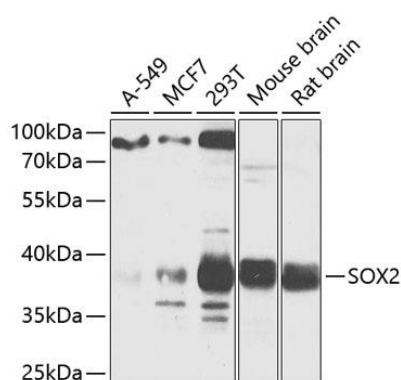
### Immunogen:

Recombinant fusion protein containing a sequence corresponding to amino acids 1-140 of human SOX2 (NP\_003097.1).

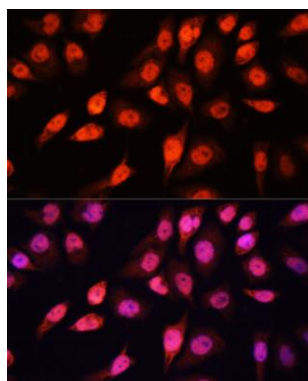
### Storage:

Store at -20°C. Avoid freeze / thaw cycles. Buffer: PBS with 0.02% sodium azide, 50% glycerol, pH7.3.

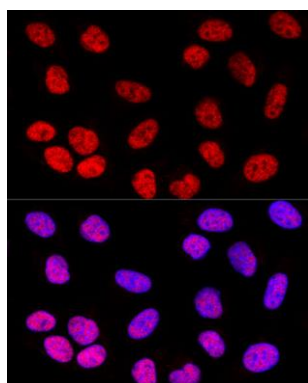
## Product Images



Immunofluorescence analysis of C6 cells using SOX2 Polyclonal Antibody (CAB11501) at dilution of 1:100 (40x lens). Blue: DAPI for nuclear staining.



Immunofluorescence analysis of HeLa cells using SOX2 Polyclonal Antibody (CAB11501) at dilution of 1:100 (40x lens). Blue: DAPI for nuclear staining.



Confocal immunofluorescence analysis of U-2 OS cells using SOX2 Polyclonal Antibody (CAB11501) at dilution of 1:200. Blue: DAPI for nuclear staining.